

INDUSTRIAL CRANES
NUCLEAR CRANES
PORT CRANES
HEAVY-DUTY LIFT TRUCKS
SERVICE
MACHINE TOOL SERVICE

REACH STACKERS

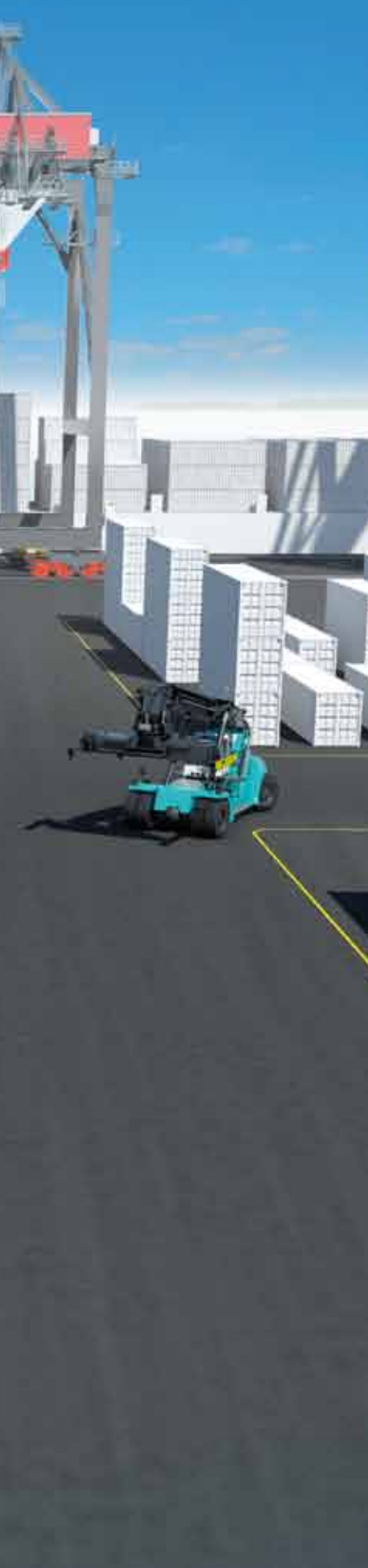
KONECRANES®
Lifting Businesses™

 **FORKLIFTCENTER**

10 – 80 tons
REACH STACKERS
WITH HEART







Remarkable versatility FROM CONTAINERS TO INDUSTRIAL CARGO

We have a long history of working with container ports and intermodal terminals that are expert buyers and operators of reach stackers. Our container handling customers demand a lot of us, and we have a long track record of meeting their requirements year after year.

Larger reach stackers are needed for railroad stacking. To load and unload on more than one track you need a flexible reach stacker with a large lifting capacity and an extended set of functions. You will find a reach stacker in our range that will meet the specific requirements of your terminal.

Industrial workhorses

We also work with many industrial companies that need customized reach stackers for their specific industry. Our reach stackers are remarkably adaptable to industrial cargo handling. We provide special spreaders incorporating steel grabs, lifting magnets, vacuum grippers and coil C-hooks among other attachments. What kind of material do you need to lift and move? Contact us. You'll probably find we have plenty of experience in your industry and can provide the ideal reach stacker.

Applications

- Container ports and terminals
- Railroads and intermodal
- Trimodal river handling
- Transport, shipping and logistics
- Steel and aluminum
- Automotive
- Oil and gas
- Wind power
- Nuclear power
- Waste-to-energy

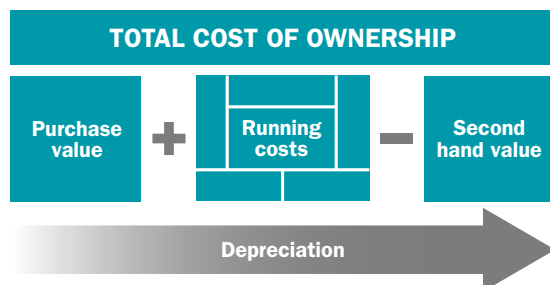


**Made with heart
in every detail**

SMARTER WHERE IT MATTERS

Konecranes has been manufacturing, selling and supporting heavy-duty lift trucks for some 60 years. Buy a reach stacker from us today and you will get the latest technology, the lowest Total Cost of Ownership, and a reach stacker made with heart.

We claim the lowest Total Cost of Ownership with our reach stackers, understood as an equation running over a time period of years as shown below. When you're shopping around the suppliers and comparing prices, our truck will probably not be the cheapest. But it will provide the best value over time.



Close to you

We sell our lift trucks around the world in two ways: directly via our own sales and service organizations in about ten countries, and indirectly via distributors in more than 80 countries. In both cases, our trucks are fully supported with quickly delivered spare parts and personalized service. Konecranes has the widest service reach of any company in the lifting business. And our distributors are some of the most respected in the business.

Service made easy

To reduce lifetime running and maintenance costs we have extended the service interval of the engine by 500 hours, the gearbox by 1000 hours and the hydraulics by 4000 hours.

Our HLL ultra-fine filter system extends the hydraulic oil change interval from 4000 up to 12000 hours. In practice, you will use up to 80% less hydraulic oil than with a conventional hydraulic system.

GENUINE KONECRANES PARTS

Genuine Konecranes parts are the best protection for your investment. They pay off in truck performance and uptime.

PARTS ONLINE

> Easy to find, easy to buy

REAL-TIME SHIPMENT INFORMATION

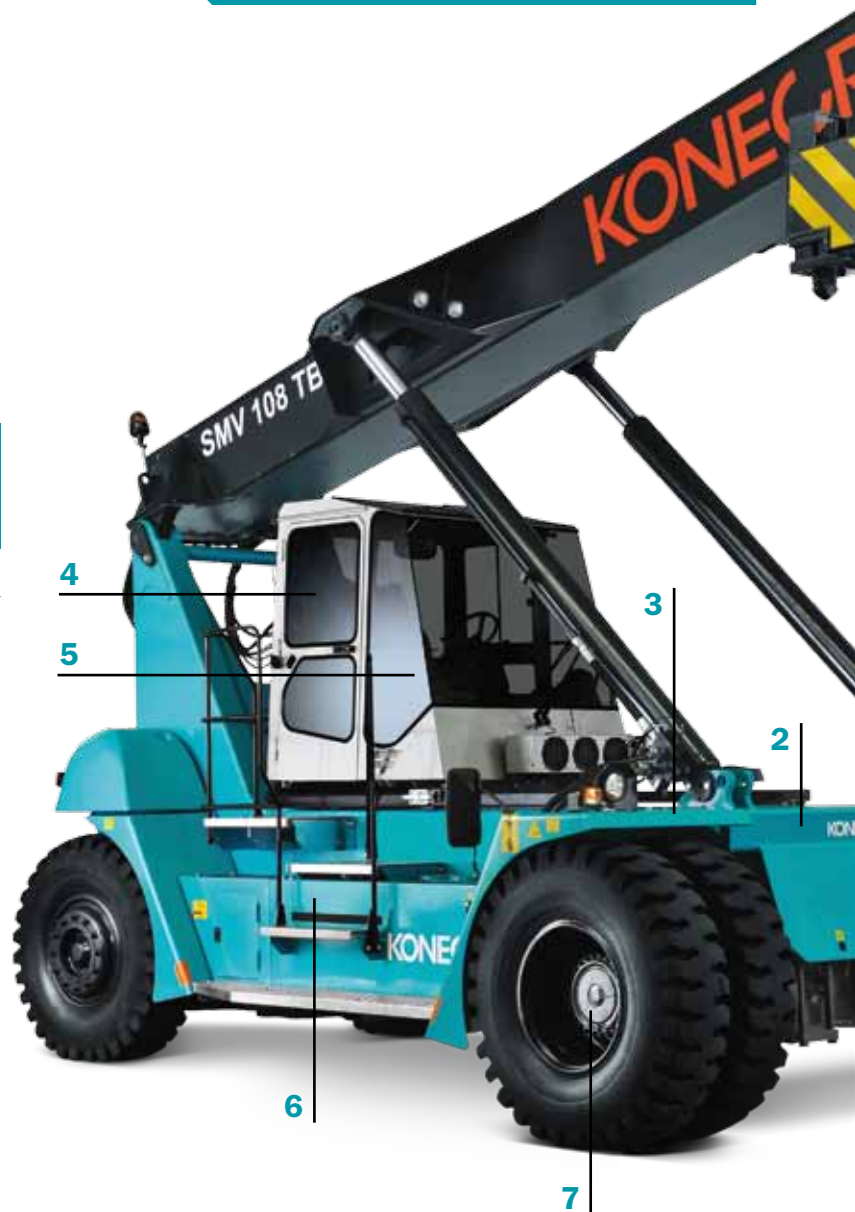
> You know where your parts are

FAST DELIVERY

> Parts in stock are in your hands within 1–3 days

PROTECTION BOX

> All the filters you need, in one package





1 Modern and durable lifting spreaders

Top-lift for 20/40/53 ft containers, 300 degrees rotation, 1600 mm total side-shift, 4 lift eyes for sling cargo. MPS mechanical (± 2 deg) or HPS hydraulic pile slope (± 6 deg). The combi spreader can also lift trailers and swap bodies with 4 folding lift legs.

2 Smart load-sensing hydraulics

They sense the load and adapt the lifting power to the weight of the load. The truck provides maximum power only when really needed, so it consumes less fuel while reducing emissions and noise.

3 Powerful engine

Certified low-emission engine provides extra high torque at low revs for reduced fuel consumption and low noise levels. We offer a variety of engines for EU stage 2/3a/3b and EPA Tier 2/3/4i.

1

4 ErgoCab, probably the best cabin on the market

Every detail has been carefully designed for comfort and safety. Controls, displays, ventilation and seating work to boost driver productivity. Excellent visibility in all directions.

5 Intelligent Electronic Machine Control, EMC Master

Full monitoring of all the vital components and functions. Programmable settings. CanBus technology increases engine and transmission reliability.

6 Heavy-duty box-type chassis

The strongest on the market. The foundation of long-lasting high performance.

7 Maintenance-free brakes

Brakes with continuous oil cooling provide full braking power in every situation.

8 Excellent stability

Wide, strong drive axle and long wheelbase. The two keys to excellent stability for safe lifting of heavy loads.

8

Intermodal operations, Helsingborg, Sweden



Satisfied customers
around the world
**OUT IN
THE FIELD**

Worldwide, Konecranes reach stackers are hard at work across an amazing range of container handling and industrial applications.

Multi-purpose operations, Germany



Laden container handling, Norway



Steel slab handling, Finland



Empty container handling, Germany



La Spezia, Italy



Intermodal operations, UK



Laden container handling, China



Oil and gas pipeline handling, Norway



Intermodal operations, Helsingborg, Sweden



ErgoCab

TRULY SPACIOUS, REMARKABLE VISIBILITY

Customized precisely as you need.

Step inside and you will find that ErgoCab is truly spacious: there is plenty of room for the driver and any extra equipment you might require.

You will also be struck by the remarkable visibility. The windows are very large. There are no corner posts, and the roof cross member is very strong but thin. We have done everything possible to ensure clear sightlines to the key working areas, both in the front, to the sides and to the rear.

You can customize ErgoCab precisely as you require for your container handling operation. Select the joystick, joystick panel, steering wheel, driver's seat and instrumentation that you need. Also available: a hydraulic sliding cabin (stroke 2900 mm), a vertically movable cabin RHS (stroke 2850 mm), and EMC remote control.



Remote control unit for rail and barge handling

1 Remarkable visibility

Visibility is very difficult to measure objectively: you just know it when you see it. Sit down in ErgoCab, see what visibility from a lift truck cabin can be.

2 Intelligent Electronic Machine Control

Our EMC Master system gives the driver real-time information on truck performance including full monitoring of the engine, transmission, hydraulics and joystick.

3 Left armrest mini-steering options

Optional, ergonomic steering solutions that improve productivity.

4 Ergonomic instrumentation

Whatever extra equipment you need, we can install it as part of an ergonomic instrumentation layout. ErgoCab is truly spacious.

5 Comfort

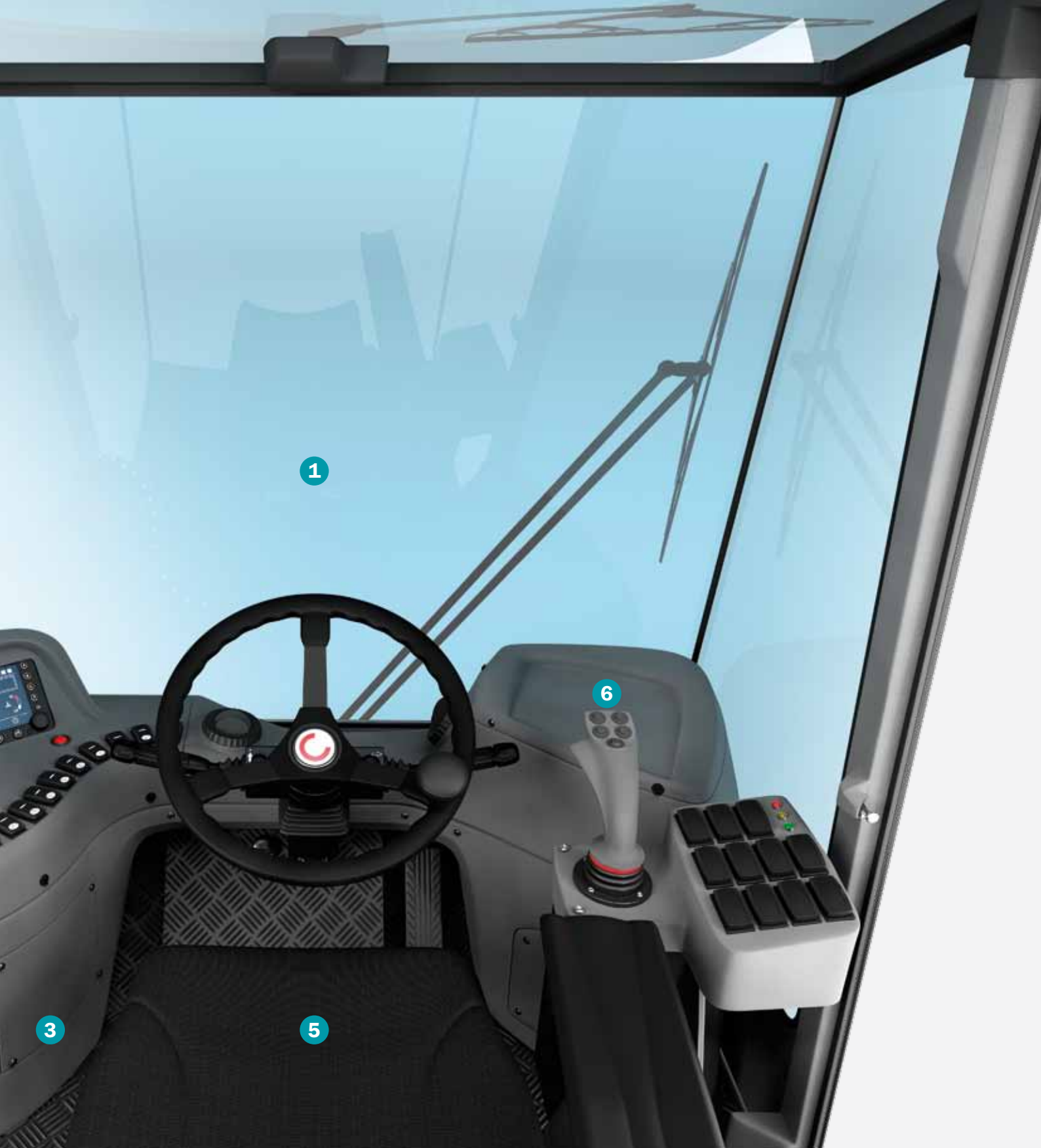
An excellent seat with compressor suspension, powerful cabin heating and ventilation, air conditioning – the driver is provided with every possible comfort.

6 Joystick control

Available with electronic joystick and auto throttle.

3 Left armrest mini-steering options





3

5

6

1



Lever steering with return



Mini-wheel steering



Lever steering without return

A world of options

BOOSTING SAFETY AND EFFICIENCY

Konecranes invests significantly in reach stacker R&D to be the first to offer new technologies that improve performance and safety. We also ensure that our reach stackers are fully compliant with emissions regulations, anticipating their evolution as a normal part of our product development process.

Emissions-compliant diesel engines

We offer a wide range of powerful Volvo, Scania and Cummins engines certified according to EU stage 2/3a/3b and US EPA Tier 2/3/4i. For EU stage 2 or 3a / US EPA Tier 2 or 3 compliance we can offer additional 2-way catalyzers or particle filters (including a catalyzer) to reduce exhaust emissions.

EMC Master

Our Intelligent Electronic Machine Control system, EMC Master, provides the following functions as standard:

- Electronic overload & safety system
- Load management
- Full truck monitoring
- ECO-Drive and fuel management
- Productivity counter management
- Driver log-in (20 drivers)
- Data logging of alarms and errors
- Transport mode (boom/spreader load optimizer)

The following functions are optional:

- Vertical auto-lift function
- Horizontal auto-lift function
- Remote control unit (railroad/barge loading)
- Mini-wheel steering
- Mini-lever steering
- Auto engine shut-down
- Auto parking brake
- Drive speed limitation (unloaded/loaded)
- Remote Access Service (via GSM)

NearGuard warning system

The award-winning NearGuard warning system is based on Radio Frequency Identification (RFID) technology. The system consists of 2–4 receivers mounted on the reach stacker and RFID tags attached to obstacles and/or employees working in the lift truck's operating area. When the reach stacker is driven in close proximity to a tagged obstacle or employee, the driver sees a flashing warning indicator on the EMC control system's color display. NearGuard brings a powerful new dimension to reach stacker safety and infrastructure protection.

Tire pressure monitor

Under-inflated tires can increase fuel consumption by as much as 15% while impairing stability and drivability. Our tire pressure monitor makes it easy to keep your lift truck tires properly inflated. It's installed in minutes. If you combine it with the drive speed limitation provided by EMC Master you can extend the life of your tires even further.

Fire alarm and suppression system

We offer an effective fire alarm and suppression system that can be activated either manually or automatically. When the reach stacker is in use, the system discharges in one of three ways: manually from inside the cabin; manually from outside via a mudguard trigger; automatically, triggered by sensors in the engine compartment. When the reach stacker is not in use, i.e. when the master power switch is turned off, the system discharges automatically when the fire alarm goes off.

Other safety options

- Parking Distance Control (PDC) with sensors for driving in reverse.
- Breath Analyzer: an alcohol test unit which requires the driver to take a breath test before starting the reach stacker.
- Camera Supervision System: can be mounted as a reversing camera on the rear of the reach stacker or as a forward camera mounted on the spreader or chassis.

1



2



3



4





5

7

6

- 1 EMC Master monitor
- 2 TURBO 2 air filter for engine, 2-stage cyclone heavy duty filter with indicator
- 3 Tire pressure monitor
- 4 Reverse camera display
- 5 Elevating cabin for railroad operations, stroke 2.9 m, to see over the 1st rail set and load on 2nd rail set. Up to 10 extra lamps for improved visibility: choose between Halogen, Xenon and LED
- 6 Joystick instead of levers
- 7 Cabin options: touch screen, keyboard, reading lamp, side mirror, side-mounted roof wiper, sun visor roof & front, compressor seat etc.

What do you need to lift?

WE HAVE THE ATTACHMENT

You'll find your lifting solution in our complete range of attachments for reach stackers.



Container handling



ELME 517-MPS

Telescopic spreader for empty ISO containers with capacity up to 10 tons. Strong and well-proven single beam spreader design, floating twistlock (± 10 mm) with hydraulic operation and mechanical safety locking. Hydraulic extension with 2 cylinders (20–40 ft), large sideshift (± 800 mm) with 2 hydraulic cylinders and full rotation ($-105/+195$ deg) with 1 hydraulic motor (turning) and 1 brake (holding). Spreader side tilt ± 2 deg (MPS = mechanical pile slope). The spreader frame and the end beams are of strong heavy-duty design. Weight = appr. 4.8 tons.



ELME 817-MPS/OFL (folding)

With overheight folding legs for open-top containers and flat racks (extra high cargo). The foldable extension legs are 1600 or 2100 mm long and activated by 4 cylinders. Weight appr. 10.3–11.3 tons.



ELME 817-MPS

Telescopic spreader for laden ISO containers with capacity up to 45 tons. Strong and well-proven parallel double beam spreader design, floating twistlock (± 10 mm) with hydraulic operation and mechanical safety locking. Hydraulic extension with 2 cylinders (20–40 ft), big sideshift (± 800 mm) with 2 hydraulic cylinders and full rotation ($-105/+195$ deg) with 1 hydraulic motor (turning) and 2 brakes (holding). Spreader side tilt with stroke of ± 2 deg (MPS = mechanical pile slope) and 4 lift eyes included for slings (45 tons). ELME 817-HPS with a stroke of ± 6 deg (HPS = hydraulic pile slope with 4 cylinders). The spreader frame and the end beams are of strong heavy-duty design. Weight 817-MPS/HPS = appr. 9.3/10.3 tons.



ELME 817-MPS/OFL in action

Above, legs shown in unfolded position with an open-top container with high cargo. Flat racks often have overheight cargo that must be lifted like this.

Also available

- Pipe and tube handling attachment
- Clamp for steel handling

Several others available upon request



Intermodal handling



Industrial handling



ELME 857-HPS (folding)

Telescopic intermodal spreader (combi/piggyback) for laden ISO containers, swap bodies and trailer handling with capacity up to 45 tons (in twistlocks/in lift legs). Extension 20/30/40 ft is included. The lift legs “fold in” and “fold out” in a sequence with sensors in each lift leg / lift shoe. Leg length = 3100 mm and leg opening = 1700–3200 mm. The package of spreader frame and legs is of strong heavy-duty design. All container functions as for ELME 817-MPS/OFL. Weight appr. 13.6 tons.



ELME industrial tool carrier system

For connecting tools (connection points = 2500 x 760 mm). Strong and well-proven single beam spreader design, floating twistlock (± 10 mm) with hydraulic operation and mechanical safety locking. Large sideshift (TC-50 = ± 500 mm / TC-65 = ± 300 mm) with 1 hydraulic cylinder and full rotation ($-105/+195$ deg) with 1 hydraulic motor (turning) and 1 brake (holding). Spreader side tilt ± 2 deg (MPS) or ± 6 deg (HPS). The spreader frame and the end beams are of strong heavy-duty design. Weight TC-50-MPS/TC-65-MPS = appr. 5.0–7.5 tons.



ELME 857-HPS in action

Legs shown in unfolded position with a trailer being lifted.



Hydraulic steel slab grab unit

Hydraulic steel slab grab unit with pairs of hydraulic lifting jaws. The grab can lift 1–4 slabs if the height adjustment function is included. Various slab width combinations are available, width min-max 700–1800/900–2000/1500–2600 mm. Capacities up to 50 tons (in grab unit). Grab weight = appr. 9.0–12.0 tons.

EQUIPMENT

For all Konecranes reach stackers

STANDARD EQUIPMENT

TRUCK BODY

Box-type chassis

- Strong box profile and cross-members
- Thick steel plate reinforcement, both front and rear
- Safe, ergonomic access steps and hand rails LHS+RHS
- Strong lift cylinder and boom fixations in chassis
- Lifting eyes, front and rear in the chassis/boom

Standard colors

- Chassis, tanks, mudguards & rear: seagreen NCS S2555 B30G
- Mast, carriage, spreader & axles: black RAL 7021
- Cabin & engine hood: light grey RAL 70335

Steel mudguards

STEERING AXLE

- Smooth power steering with double-acting cylinder
- Wide steering angles providing small turning radius

DRIVE AXLE

Kessler D81/102/106/111

- Wide axle with 2-stage hub reduction and differential
- Oil-cooled, maintenance-free wet disc brakes

DIESEL ENGINE

See technical info charts

- Certified for EU stage 2, 3A, 3B / EPA Tier 2, 3, 4i
- Low-emission
- Clean, powerful, fuel-efficient with CanBus controls

Engine air filter, 2-stage type

TRANSMISSION

- 108-2518; DANA TE-17 (3+3 gears)
- 4123-4545; DANA TE-27 (4+4 gears)
- Fully automatic, softshift
- Torque converter, smooth powershift, declutch, reverse protection, CanBus controls

COOLING SYSTEM

Tropical, multi-radiator

- Radiators for engine water, air for intercooler, oil for transmission
- Oil cooling / flushing for brakes

HYDRAULIC SYSTEM

Load-sensing, power-on-demand

- Smooth, accurate, high-speed lifting and lowering
- Variable piston pumps with intelligent control
- Leak-free ORFS couplings (O-ring) for entire truck
- Large dual tanks for hydraulics and brakes with return filters (12 microns)

ELECTRICAL SYSTEM 24 V

Alternator standard size 55–110 Ah

LIGHTS

- Full road lighting (in Halogen): blinkers, brake lights, tail lights, position lights
- 2 x Halogen high beam / low beam headlights front
- 2 x Halogen reverse lights rear
- 4 x Halogen work lights on lift boom
- 2 x Halogen work lights on spreader

OPTIONAL EQUIPMENT

TRUCK BODY

- Fire extinguisher on truck body or inside cabin
- Fire fighting system for driveline compartment (semi-automatic)
- Galvanized storage boxes with lid (on bottom step)
- Central greasing unit for truck and spreaders
- Custom colour painting, stickers & customer logos

Different mud flap models, front and rear

STEERING AXLE

- Wheel nut protection and steering cylinder spacers

DRIVE AXLE

DIESEL ENGINE

- SMV 108-2518: Volvo and Cummins (180–201 kW / 990–1180 Nm)
- SMV 4123-4545: Volvo, Scania and Cummins (256–294 kW / 1640–2172 Nm)
- Certified for EU stage 2, 3A, 3B / EPA Tier 2, 3, 4i
- Low-emission
- Clean, powerful, fuel-efficient with CanBus controls
- Engine air filter Turbo II, 2-stage cyclone type

TRANSMISSION

- SMV 108-2518; ZF 4WG-191 (4+3 gears)
- SMV 4123-4545; DANA TE-32 (4+4 gears) and ZF 4WG-261 (4+3 gears)
- Fully automatic, softshift
- Torque converter, smooth powershift, declutch, reverse protection, CanBus controls

COOLING SYSTEM

- Extra radiator / cooling circuit for hydraulic system

HYDRAULIC SYSTEM

- High pressure filters (12 um)
- HLL hydraulic longlife filters (3 um)
- Hydraulic oil cooling circuit for working hydraulics

ELECTRICAL SYSTEM 24 V

- Larger alternator, 80–150 Ah
- Reverse alarm (beeping)
- NearGuard RFID warning system (receiver and transmitters)
- NATO starting aid contact
- Built-in battery charger
- Pre-heater for engine, transmission, hydraulics and cabin
- Power connections 400V/3-phase for multiple preheaters

LIGHTS

- Full road lighting (in LED): blinkers, brake lights, tail lights, position lights,
- Extra work lights: Halogen (70 W), Xenon (3250 Lum), LED8 (1660 Lum) or LED16 (2900 Lum)
- LED warning beacons
- LED strobe warning flash lights: front, rear or other position

STANDARD EQUIPMENT

CABIN

ErgoCab size large (L), two doors

L x W x H = 1580 x 1450 x 1620 mm

Sliding cabin

TB models: manual sliding, stroke 1800 mm

CB models: hydraulic sliding, stroke 2900 mm

Spacious, comfortable, excellent ergonomics

Excellent visibility: no front corner posts

Powerful heating and cooling unit

Electrical connection 24V (1 x in cab roof RHS)

3 x windshield wipers / washers

Adjustable seat, seat belt, steering wheel

Joystick (electronic servo / auto throttle)

OPTIONAL EQUIPMENT

CABIN

TB models: hydraulic sliding, stroke 2900 mm

TB/CB models: vertical moveable cabin RHS, stroke 2850 mm

Extra mirrors inside cabin

Reverse, front and spreader cameras with 6.7" display (MOTEC)

Air conditioning or climate control unit (stepless fan speed)

Extra electric cabin heater 220V (DEFA)

Extra diesel-powered cabin heater (Webasto)

Extra electrical connections 24V (cab roof or front panel RHS)

Extra electrical connections 12V (cab roof or front panel RHS)

Interval wiper speed switches: front, roof and rear windows

Pneumatic compressor horn

Various seats BEGE, ISRI, Grammer

Additional seat dampening: single or double

Two-point or three-point seat belt

Seat heating

Extra trainer's seat, leather, fully-foldable LHS

Tire pressure monitor: cabin display, 6 tire sensors

Sun blinds: front, roof or rear windows, fixed or adjustable

Alcohol lock / start-up prohibitor (Draeger)

Reverse alarm (beeping)

Universal mounting system for RHS for A4/A5 writing pad,

keyboard, computer, monitor, com radio and reading lamp

CD player / radio / MP3 player with dual loudspeakers

MACHINE CONTROL

EMC Master intelligent machine control, display: MDL2, size 6.5"

Monitoring of engine, transmission, hydraulic system, service, electronic joystick, spreader, counters and info

EMC Safety, overload and load management system

EMC 106: Monitoring (diagnostics/parameters/settings)

EMC 114: Electronic servo joystick (auto-throttle)

EMC 123: ECO-Drive (fuel consumption, saving, settings)

EMC 124: Driver log-in (up to 20 drivers)

EMC 125: DATA-Log (storage of alarms and errors)

EMC 129: Productivity Hour Counter

EMC 130: Transport mode (boom/spreader position)

MACHINE CONTROL

EMC 102: Lever steering (with spring return to zero)

EMC 103: Lever steering (no spring return to zero)

EMC 104: Mini-wheel steering (speed progressive steering function)

EMC 105: Mini-wheel steering (not progressive steering function)

EMC 107: Electronic weight scale (resolution 0.1 ton)

EMC 112: Auto engine shut-down timer

EMC 122: Drive speed settings (on/off, programmable)

EMC 126: GSM remote access

EMC 131: Vertical lift

EMC 132: Vertical lift / horizontal outreach

EMC 133: Remote control units for rail and barge handling

NearGuard RFID warning system (receiver and transmitters)

BOOM

2-stage box-type lift boom

Strong box profile and cross-members

Thick steel plate reinforcement, both front and rear

BOOM

Long-nose boom to reach ground level (extended 1000 mm)

Long-nose boom to reach ground level (extended 1500 mm)

Distance piece (extended 1500 mm) between nose and rotator (for barge)

Distance piece (extended 2000 mm) between nose and rotator (for barge)

SPREADERS

SMV 108: ELME 517 (10 t)

Stops 20–40 ft, 4 floating twistlocks, rotation 300 deg

Mechanical Pile Slope ± 2 deg, sideshift ± 800 mm

SMV 4127-4545 TB: ELME 817 (45 t)

Stops 20–40 ft, 4 floating twistlocks, rotation 300 deg, 4 lifting eyes

Mechanical Pile Slope ± 2 deg, sideshift ± 800 mm

SPREADERS

Extra stops at 24/30/35 ft

Hydraulic Pile Slope ± 6 deg

Extra stops at 24/30/35 ft

Hydraulic Pile Slope ± 6 deg

Power Damp Control (PDC) + tilt lock

Over-height folding legs 1600 and 2100 mm

Separate ELME 952/953 Bottom Trailer Lift (2/4 fold legs)

Extra lifting eyes 2 x in centre or 4 x at 2500 mm distance

SMV 4123-4545 CB: ELME 857 (45 t)

Stops 20/30/40 ft, 4 floating twistlocks, 4 lifting eyes,

Hydraulic Pile Slope ± 6 deg, sideshift ± 800 mm

PDC Power Damp Control + tilt lock, 4 lifting legs

Extra stops at 24/35 ft

INDUSTRIAL HANDLING

Models SMV 108-2518-4127-4545 TB

INDUSTRIAL HANDLING

ELME 7000 and 7010 tool carriers (50 and 65 tons)

Steel slab grab, coil hook for coils, magnet for steel (mounted on tool carrier)

Lifting hook on boom nose, free pivot, free rotation, no power (30–80 tons)

SERVICE AND PARTS

Standard warranty 12 months / 2000 hours

SERVICE AND PARTS

Extended warranty on truck and driveline (18–36 months / 3000–6000 hours)

Spare tires, rims, complete wheels: various brands

Spare part kits: basic, extended, special

Complete filter kits: 2000 hours up to 8000 hours

PREMIUM PERFORMANCE IS WITHIN YOUR REACH

Reach stackers for container handling, 10 to 45 tons



| MODEL NAME | CAPACITY | WHEELBASE |
|-------------|-------------|-----------|
| SMV 108 TB6 | 10-8-5 tons | 5000 mm |



| MODEL NAME | CAPACITY | WHEELBASE |
|--------------|--------------|-----------|
| SMV 2115 TB3 | 21-15-5 tons | 5500 mm |
| SMV 2518 TB3 | 25-18-8 tons | 5500 mm |



| MODEL NAME | CAPACITY | WHEELBASE |
|---------------------|---------------|-----------|
| SMV 4127 TB5 (TB6)* | 41-27-14 tons | 6400 mm |
| SMV 4527 TB5 (TB6)* | 45-27-14 tons | 6400 mm |
| SMV 4531 TB5 (TB6)* | 45-31-16 tons | 6400 mm |



| MODEL NAME | CAPACITY | WHEELBASE |
|---------------------|---------------|-----------|
| SMV 4535 TB5 (TB6)* | 45-35-20 tons | 6400 mm |
| SMV 4535 TBX5** | 45-37-24 tons | 6400 mm |
| SMV 4537 TB5 | 45-37-19 tons | 6400 mm |
| SMV 4537 TBX5** | 45-41-28 tons | 6400 mm |



| MODEL NAME | CAPACITY | WHEELBASE |
|-----------------|---------------|-----------|
| SMV 4542 TB5 | 45-42-24 tons | 7250 mm |
| SMV 4542 TBX5** | 45-44-30 tons | 7250 mm |
| SMV 4543 TB5 | 45-42-25 tons | 7500 mm |
| SMV 4543 TBX5** | 45-44-34 tons | 7500 mm |



| MODEL NAME | CAPACITY | WHEELBASE |
|-----------------|---------------|-----------|
| SMV 4545 TB5 | 45-45-37 tons | 8000 mm |
| SMV 4545 TBX5** | 45-45-45 tons | 8000 mm |

Reach stackers for intermodal handling, 41 to 45 tons



| MODEL NAME | CAPACITY | WHEELBASE |
|------------------|---------------|-----------|
| SMV 4123 CB5 | 41-23-9 tons | 6400 mm |
| SMV 4527 CB5 | 45-27-13 tons | 6400 mm |
| SMV 4531 CB5 | 45-31-16 tons | 6400 mm |
| SMV 4531 CBX5*** | 45-33-20 tons | 6400 mm |
| SMV 4533 CB5 | 45-33-16 tons | 6400 mm |
| SMV 4533 CBX5*** | 45-37-24 tons | 6400 mm |

Reach stackers for barge handling, 45 tons



| MODEL NAME | CAPACITY | WHEELBASE |
|--------------------|-----------------------|-----------|
| SMV 4542 TB4 BH | 45-37-23 tons (yard) | 7500 mm |
| | 43-30-18 tons (barge) | 7500 mm |
| SMV 4542 TBX4 BH** | 45-41-31 tons (yard) | 7500 mm |
| | 45-37-26 tons (barge) | 7500 mm |
| SMV 4545 TB3 BH | 45-45-35 tons (yard) | 9000 mm |
| | 45-37-30 tons (barge) | 9000 mm |



| MODEL NAME | CAPACITY | WHEELBASE |
|------------------|---------------|-----------|
| SMV 4537 CB5 | 45-37-22 tons | 7250 mm |
| SMV 4537 CBX5 | 45-40-28 tons | 7250 mm |
| SMV 4538 CB5 | 45-38-23 tons | 7500 mm |
| SMV 4538 CBX5*** | 45-40-32 tons | 7500 mm |

Reach stackers for industrial handling, 35 to 80 tons



| MODEL NAME | CAPACITY | WHEELBASE |
|------------|------------|-----------|
| SMV 4127 | 35-50 tons | 6400 mm |
| SMV 4527 | 35-50 tons | 6400 mm |
| SMV 4531 | 35-50 tons | 6400 mm |
| SMV 4535 | 35-50 tons | 6400 mm |
| SMV 4542 | 40-60 tons | 7250 mm |
| SMV 4545 | 40-80 tons | 8000 mm |



| MODEL NAME | CAPACITY | WHEELBASE |
|------------------|---------------|-----------|
| SMV 4545 CB5 | 45-45-33 tons | 8000 mm |
| SMV 4545 CBX5*** | 45-45-45 tons | 8000 mm |

*TB5 = 5 high, TB6 = 6 high
 **TBX = Capacity with support jacks engaged
 ***CBX = Capacity with support jacks engaged
Other models upon request

DRIVELINES

Reach stackers 10–25 tons

| MODEL | | SMV 108 – 2518 | | | |
|------------------------------|--------|----------------|----------------|----------------|-----------------|
| Engine | | Units | | | |
| Make | | Volvo | Volvo | Cummins | Volvo |
| Model | | TAD-722-VE | TAD-760-VE | QSB-6,7-C260 | TAD-762-VE |
| Emission approval, EU / US | | St 2 / Tier 2 | St 3a / Tier 3 | St 3a / Tier 3 | St 3b / Tier 4i |
| Power / max speed (ISO 3046) | kW/rpm | 180 / 2300 | 184 / 2300 | 201 / 2300 | 185 / 2300 |
| Torque @ speed (ISO 3046) | Nm/rpm | 1050 / 1400 | 1100 / 1500 | 990 / 1500 | 1180 / 1250 |
| Displacement / cylinders | L/-- | 7.2 / 6-cyl | 7.2 / 6-cyl | 6.7 / 6-cyl | 7.2 / 6-cyl |
| Alternator power / capacity | W/Amp | 1540 / 55 | 2240 / 80 | 1960 / 70 | 2800 / 100 |
| Fuel consumption (normal) | L/hour | 8-12 | 7-12 | 7-12 | 7-12 |
| Transmission (make / model) | | DANA TE-17 | DANA TE-17 | DANA TE-17 | ZF 4WG-191 |

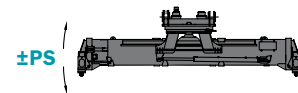
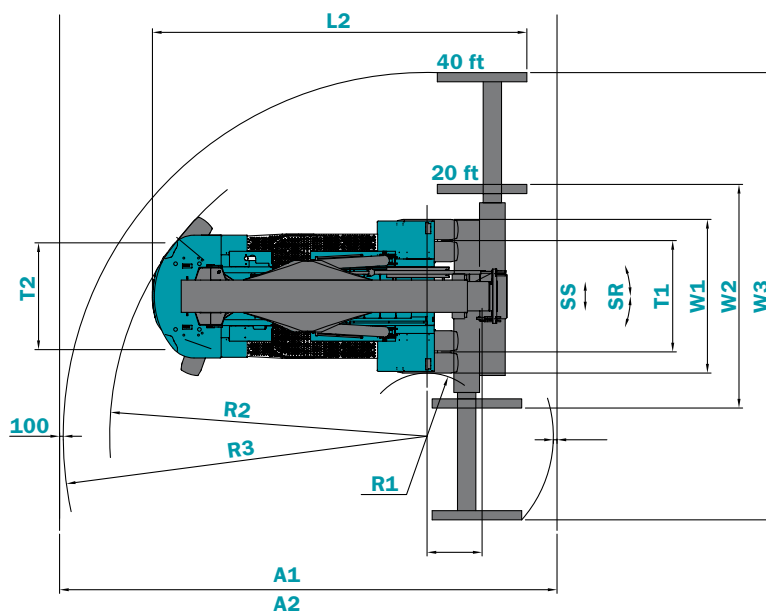
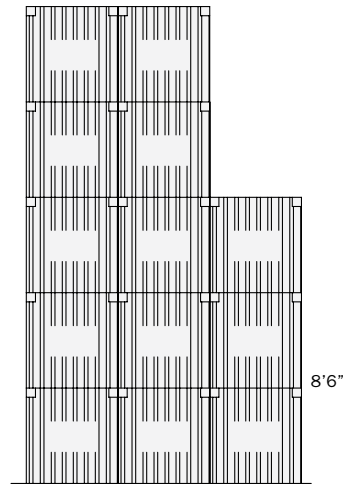
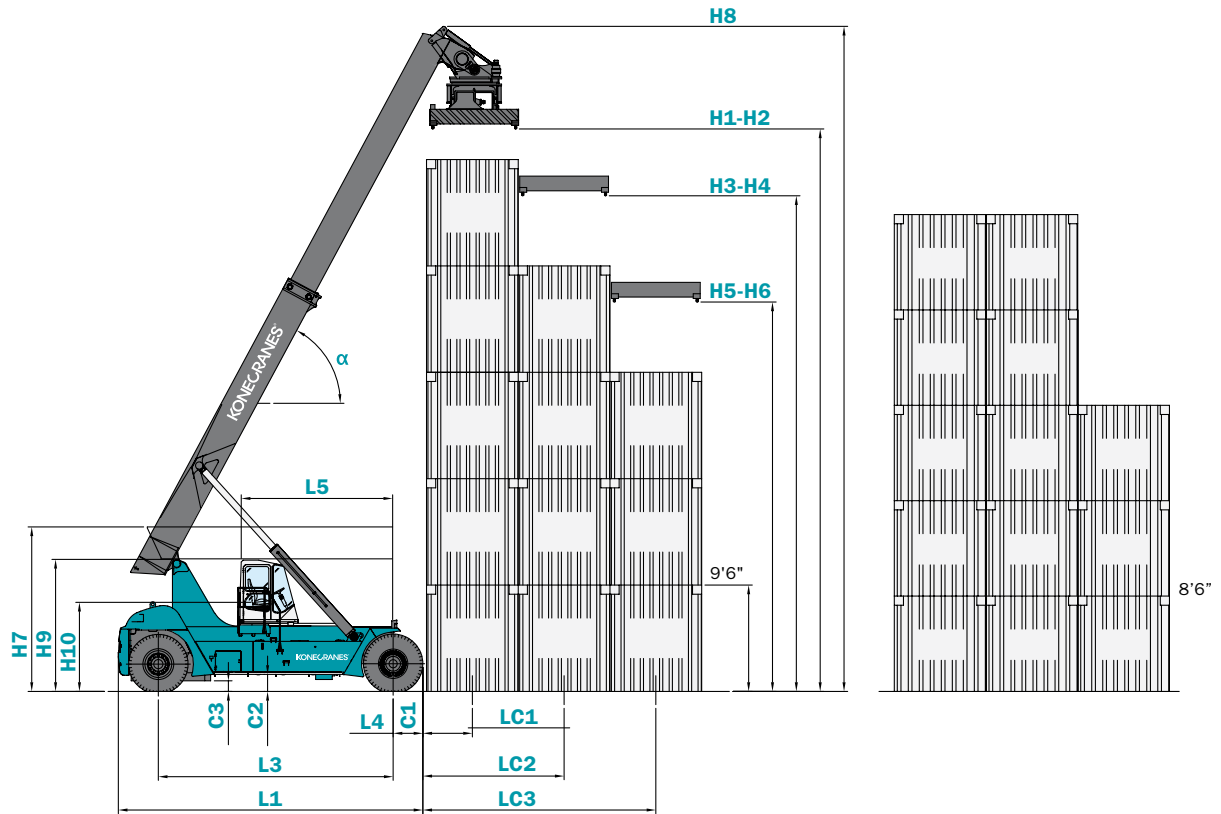
| MODEL | | SMV 108 – 2518 | | | |
|--------------------------|-----|----------------|-----------|--|--|
| Transmission | | Units | | | |
| Make | | DANA | ZF | | |
| Model | | TE-17300 | 4WG-191 | | |
| Gear shift type | | Automatic | Automatic | | |
| No. of gears (fwd / rev) | No. | 3 / 3 | 4 / 3 | | |
| Power rating (max) | kW | 200 | 200 | | |

Reach stackers 41–45 tons

| MODEL | | SMV 4127 - 4545 TBX5 to SMV 4123 - 4545 CBX5 | | | | | | | |
|------------------------------|--------|--|---------------|----------------|----------------|---------------------------------|---------------------------------|-----------------|-----------------|
| Engine | | Units | | | | | | | |
| Make | | Volvo | Scania | Scania | Cummins | Volvo | Scania | Volvo | Scania |
| Model | | TAD-1340-VE | DC-13-074 | DC-13-076 | QSM-11-C335 | TAD-1360-VE | DC-13-081 | TAD-1361-VE | DC-13-077 |
| Emission approval, EU / US | | St 2 / Tier 2 | St 2 / Tier 2 | St 3a / Tier 3 | St 3a / Tier 3 | St 3b / Tier 4i | St 3b / Tier 4i | St 3b / Tier 4i | St 3b / Tier 4i |
| Power / max speed (ISO 3046) | kW/rpm | 256 / 2100 | 257 / 2100 | 257 / 2100 | 272 / 2100 | 256 / 1900 | 257 / 2100 | 285 / 1900 | 294 / 2100 |
| Torque @ speed (ISO 3046) | Nm/rpm | 1770 / 1250 | 1950 / 1200 | 1640 / 1400 | 1674 / 1000 | 1740 / 1200 | 1950 / 1200 | 1940 / 1000 | 2172 / 1200 |
| Displacement / cylinders | L/-- | 12.8 / 6-cyl | 12.7 / 6-cyl | 12.7 / 6-cyl | 10.8 / 6-cyl | 12.8 / 6-cyl | 12.7 / 6-cyl | 12.8 / 6-cyl | 12.7 / 6-cyl |
| Alternator power / capacity | W/Amp | 3080 / 110 | 2800 / 100 | 2800 / 100 | 1960 / 70 | 3080 / 110 | 2800 / 100 | 3080 / 110 | 2800 / 100 |
| Fuel consumption (normal) | L/hour | 12-16 | 12-16 | 12-16 | 12-16 | 12-16 | 12-16 | 14-20 | 14-20 |
| Transmission (make / model) | | DANA TE-27 | DANA TE-27 | DANA TE-27 | DANA TE-27 | DANA TE-27 (opt. ZF 4WG-261) | DANA TE-27 (opt. ZF 4WG-261) | DANA TE-32 | DANA TE-32 |

| MODEL | | SMV 4127 - 4545 TBX5 to SMV 4123 - 4545 CBX5 | | | |
|--------------------------|-----|--|-----------|-----------|-----------|
| Transmission | | Units | | | |
| Make | | DANA | ZF | DANA | ZF |
| Model | | TE-27400 | 4WG-261 | TE-32400 | 4WG-311 |
| Gear shift type | | Automatic | Automatic | Automatic | Automatic |
| No. of gears (fwd / rev) | No. | 4 / 4 | 4 / 3 | 4 / 4 | 4 / 3 |
| Power rating (max) | kW | 270 | 280 | 325 | 330 |

DIMENSION MEASUREMENT IDENTIFIERS



TECHNICAL DATA

Reach stackers for container handling, 41 to 45 tons

| MODEL | | | SMV 4127 TB5 | SMV 4527 TB5 | SMV 4527 TB6 | SMV 4531 TB5 | |
|---|--|------------------------|--|--|---------------------|---------------------|---------------------|
| LIFTING DATA | Dimensions | Identifier | Units | | | | |
| | Lifting capacity at load center LC1 / LC2 / LC3 (no jacks) | | tons | 41 / 27 / 14 | 45 / 27 / 14 | 45 / 27 / 14 | 45 / 31 / 16 |
| | Lifting capacity at load center LC1 / LC2 / LC3 (with jacks) | | tons | - | - | - | - |
| | Load centers in row 1 / 2 / 3 | LC1 / LC2 / LC3 | mm | 2000 / 3850 / 6350 | 2000 / 3850 / 6350 | 2200 / 3850 / 6350 | 2000 / 3850 / 6350 |
| | Stacking height in row 1 (9'6" / 8'6") | | | 5 x 9'6" / 5 x 8'6" | 5 x 9'6" / 5 x 8'6" | 5 x 9'6" / 6 x 8'6" | 5 x 9'6" / 5 x 8'6" |
| | Spreader type, telescopic, locking | | | Toplift with 4 x twistlocks, extension 20-40 ft, 4 lifting eyes, safety locking (ELME 817) | | | |
| WEIGHT | Lost load center to face of tires / jacks | L4 | mm | 800 | 800 | 800 | 800 |
| | Wheelbase | L3 | mm | 6400 | 6400 | 6400 | 6400 |
| WEIGHT | Service weight | | kg | 68500 | 68500 | 69200 | 71800 |
| | Axle pressure front LC1 (unloaded / rated load) | | kg | 37500 / 96500 | 37500 / 102200 | 38200 / 104300 | 37500 / 102200 |
| | Axle pressure rear LC1 (unloaded / rated load) | | kg | 42000 / 88600 | 42000 / 88600 | 42300 / 88900 | 42000 / 95500 |
| | Axle pressure front LC2 (unloaded / rated load) | | kg | 31000 / 13000 | 31000 / 11300 | 31000 / 9900 | 34300 / 14600 |
| | Axle pressure rear LC2 (unloaded / rated load) | | kg | 26500 / 6900 | 26500 / 6900 | 26900 / 7300 | 29800 / 7300 |
| WHEELS | Tire type | | | Pneumatic | Pneumatic | Pneumatic | Pneumatic |
| | Tire dimension / ply rating, front & rear | | Inch | 18.00 x 25"/PR40 | 18.00 x 25"/PR40 | 18.00 x 25"/PR40 | 18.00 x 25"/PR40 |
| | Rim dimensions, front & rear | | Inch | 13.00 x 25" | 13.00 x 25" | 13.00 x 25" | 13.00 x 25" |
| | Tire pressure, front / rear | | MPa | 1.0 / 1.0 | 1.0 / 1.0 | 1.0 / 1.0 | 1.0 / 1.0 |
| | Number of wheels, front / rear (X = driven) | | | 4X / 2 | 4X / 2 | 4X / 2 | 4X / 2 |
| | Track width, front / rear | T1 / T2 | mm | 3030 / 2911 | 3030 / 2911 | 3030 / 2911 | 3030 / 2911 |
| DIMENSIONS | Boom angle, min - max | α | deg | 0 - 62 | 0 - 62 | 0 - 62 | 0 - 62 |
| | Lifting height in twistlocks, min - max at LC1 | H1 - H2 | mm | 1150 - 15300 | 1150 - 15300 | 1150 - 15300 | 1150 - 15300 |
| | Lifting height in twistlocks, min - max at LC2 | H3 - H4 | mm | 1150 - 13400 | 1150 - 13400 | 1150 - 13400 | 1150 - 13400 |
| | Lifting height in twistlocks, min - max at LC3 | H5 - H6 | mm | 1150 - 10500 | 1150 - 10500 | 1150 - 10500 | 1150 - 10500 |
| | Boom height, min - max | H7 - H8 | mm | 4500 - 18200 | 4500 - 18200 | 4500 - 18200 | 4500 - 18200 |
| | Truck height over cabin / seat height | H9 - H10 | mm | 3650 - 2450 | 3650 - 2450 | 3650 - 2450 | 3650 - 2450 |
| | Sliding cabin stroke (manual / hydraulic) | L5 | mm | 1800 / 2900 | 1800 / 2900 | 1800 / 2900 | 1800 / 2900 |
| | Overall length, with - without spreader | L1 - L2 | mm | 11500 - 8300 | 11500 - 8300 | 11700 - 8300 | 11500 - 8300 |
| | Drive axle width | W1 | mm | 4160 | 4160 | 4160 | 4160 |
| | Spreader width, min - max | W2 - W3 | mm | 6050 - 12175 | 6050 - 12175 | 6050 - 12175 | 6050 - 12175 |
| | Spreader sideshift | SS | mm | ± 800 | ± 800 | ± 800 | ± 800 |
| | Spreader rotation | SR | deg | -105 / 195 | -105 / 195 | -105 / 195 | -105 / 195 |
| | Mechanical Pile Slope (side tilt / no power) | PS | deg | ± 2 | ± 2 | ± 2 | ± 2 |
| PERFORMANCE | Ground clearance, front / mid / steering axle | C1 / C2 / C3 | mm | 300 / 465 / 275 | 300 / 465 / 275 | 300 / 465 / 275 | 300 / 465 / 275 |
| | Aisle width (with 20 ft / 40 ft container) | A1 / A2 | mm | 11500 / 13600 | 11500 / 13600 | 11800 / 13900 | 11500 / 13600 |
| | Turning radius, inner | R1 | mm | 1500 | 1500 | 1500 | 1500 |
| | Turning radius, outer 20 ft / outer 40 ft | R2 / R3 | mm | 8550 / 9850 | 8550 / 9850 | 8550 / 9900 | 8550 / 9850 |
| | Drive speed forward, unloaded / at rated load | | km/h | 25 / 22 | 25 / 22 | 25 / 22 | 24,5 / 22 |
| Drive speed reverse, unloaded / at rated load | | km/h | 25 / 22 | 25 / 22 | 25 / 22 | 24,5 / 22 | |
| Lifting speed, unloaded / at 40% load / at rated load | | m/s | 0.38 / 0.35 / 0.23 | 0.38 / 0.35 / 0.23 | 0.38 / 0.35 / 0.23 | 0.38 / 0.35 / 0.23 | |
| Lowering speed, unloaded / at rated load | | m/s | 0.35 / 0.40 | 0.35 / 0.40 | 0.35 / 0.40 | 0.35 / 0.40 | |
| Gradeability, at rated load, 0/2 km/h | | % / % | 29 / 22 | 29 / 22 | 25 / 20 | 25 / 20 | |
| Towing power, at rated load, 0/2 km/h | | kN / kN | 315 / 251 | 315 / 251 | 300 / 246 | 300 / 246 | |
| DRIVELINE | Engine power (min - max) | EU2 / EU3b | kW | 256 - 294 | 256 - 294 | 256 - 294 | 256 - 294 |
| | Engine torque (min - max) | EU2 / EU3b | Nm | 1640 - 2172 | 1640 - 2172 | 1640 - 2172 | 1640 - 2172 |
| | Transmission, gears forward + reverse | | | DANA 4 + 4 / ZF 4 + 3 | | | |
| | Transmission type, function, shifting | | | Automatic transmission, torque converter, reverse protection, powershift | | | |
| | Drive axle model | | | Kessler D102 | | | |
| | Driving brake system, type | | | Oil-cooled multiple wet disc brakes (WDB) | | | |
| | Parking brake system, type | | | Dry single disc / spring release | | | |
| Steering system / steering axle type | | | Hydraulic power steer / HD axle + double-acting cylinder | | | | |
| OTHERS | Load-sensing hydraulics / power-on-demand | | Yes / yes | Yes / yes | Yes / yes | Yes / yes | |
| | Safety, Monitoring & Overload System | | Yes | Yes | Yes | Yes | |
| | Hydraulic oil pressure, boom / spreader | | MPa | 24 / 15 | 24 / 15 | 24 / 15 | 24 / 15 |
| | Diesel / hydraulic tank volumes | | Lit | 650 / 850 | 650 / 850 | 650 / 850 | 650 / 850 |
| | Noise level inside cab (LM) DIN 45635 | EU2 / EU3b | dB(A) | 68 / 66 | 68 / 66 | 68 / 66 | 68 / 66 |
| Noise level inside cab (LpAZ) EN 12053 | | dB(A) | 75 | 75 | 75 | 75 | |
| Noise level outside (LWA) 2000/14/EC | | dB(A) | 111 | 111 | 111 | 111 | |

NOTE 1. TB models do not have support jacks / TBX models have support jacks for increased capacity and lower ground pressure

NOTE 2. Other lifting attachment combinations possible, check factory information

NOTE 3. Four lifting eyes on spreader are standard; extra ones can be provided plus container guides on one side of spreader

NOTE 4. Optional for laden handlers: Hydraulic Pile Slope ±6 deg and Powered Dampening Cylinders ±5 deg + tilt lock

NOTE 5. For available driveline combinations, see driveline chart and latest factory information

NOTE 6. BH = reach stacker for barge handling (other models available)

| SMV 4531 TB6 | SMV 4535 TB5 (TBX5) | SMV 4537 TB5 (TBX5) | SMV 4542 TB5 (TBX5) | SMV 4543 TB5 (TBX5) | SMV 4545 TB5 (TBX5) | SMV 4545 TB3 (BH) |
|---------------------|---------------------|---------------------|---------------------|---------------------|---------------------|---------------------|
| 45 / 31 / 16 | 45 / 35 / 20 | 45 / 37 / 19 | 45 / 42 / 24 | 45 / 42 / 25 | 45 / 45 / 37 | 45 / 45 / 35 |
| - | 45 / 37 / 24 | 45 / 41 / 28 | 45 / 44 / 30 | 45 / 44 / 34 | 45 / 45 / 45 | 45 / 45 / 35 |
| 2200 / 3850 / 6350 | 1900 / 3850 / 6350 | 2000 / 3850 / 6350 | 1800 / 3850 / 6350 | 1800 / 3850 / 6350 | 2275 / 3850 / 6350 | 1975 / 3875 / 6375 |
| 5 x 9'6" / 6 x 8'6" | 5 x 9'6" / 5 x 8'6" | 5 x 9'6" / 5 x 8'6" | 5 x 9'6" / 5 x 8'6" | 5 x 9'6" / 5 x 8'6" | 5 x 9'6" / 5 x 8'6" | 3 x 9'6" / 3 x 8'6" |
| 800 | 930 | 930 | 930 | 930 | 1025 | 1025 |
| 6400 | 6400 | 6400 | 7250 | 7500 | 8000 | 9000 |
| 72500 | 79700 | 83000 | 83500 | 84500 | 107000 | 105200 |
| 38200 / 104300 | 38700 / 103400 | 42000 / 106700 | 42000 / 104400 | 42500 / 103700 | 51000 / 114600 | 52000 / 118300 |
| 42300 / 95800 | 43400 / 104400 | 46500 / 110100 | 46400 / 116000 | 47100 / 116000 | 54600 / 127200 | 57300 / 121200 |
| 34300 / 13200 | 41000 / 21300 | 41000 / 21300 | 41500 / 24100 | 42000 / 25800 | 56000 / 37400 | 53200 / 31900 |
| 30200 / 7700 | 36300 / 10300 | 36500 / 9900 | 37100 / 9500 | 37400 / 10500 | 52400 / 24800 | 47900 / 20100 |
| Pneumatic | Pneumatic | Pneumatic | Pneumatic | Pneumatic | Pneumatic | Pneumatic |
| 18.00 x 25"/PR40 | 18.00 x 33"/PR36 | 18.00 x 33"/PR36 | 18.00 x 33"/PR36 | 18.00 x 33"/PR36 | 21.00x35"/PR40 | 21.00 x 35"/PR40 |
| 13.00 x 25" | 13.00 x 33" | 13.00 x 33" | 13.00 x 33" | 13.00 x 33" | 15.00 x 35" | 15.00 x 35" |
| 1.0 / 1.0 | 1.0 / 1.0 | 1.0 / 1.0 | 1.0 / 1.0 | 1.0 / 1.0 | 1.0 / 1.0 | 1.0 / 1.0 |
| 4X / 2 | 4X / 2 | 4X / 2 | 4X / 2 | 4X / 2 | 4X / 2 | 4X / 2 |
| 3030 / 2911 | 3030 / 2911 | 3030 / 2911 | 3030 / 2911 | 3030 / 2911 | 3227 / 3420 | 3227 / 3420 |
| 0 - 62 | 0 - 62 | 0 - 62 | 0 - 61 | 0 - 59 | 0 - 55 | 0 - 62 |
| 1150 - 16300 | 1300 - 15400 | 1300 - 15400 | 1300 - 15400 | 1300 - 15400 | 1300 - 15400 | 1300 - 15400 |
| 1150 - 14200 | 1300 - 13500 | 1300 - 13500 | 1300 - 13500 | 1300 - 13500 | 1300 - 14600 | 1300 - 13500 |
| 1150 - 11500 | 1300 - 10500 | 1300 - 10600 | 1300 - 10400 | 1300 - 10400 | 1300 - 11600 | 1300 - 10500 |
| 4500 - 19300 | 4675 - 18350 | 4775 - 18400 | 4775 - 18500 | 4975 - 18500 | 5100 - 18800 | 4675 - 18300 |
| 3650 - 2450 | 3800 - 2650 | 3800 - 2650 | 3800 - 2650 | 3800 - 2650 | 4050 - 2900 | 3800 - 2650 |
| 1800 / 2900 | 1800 / 2900 | 1800 / 2900 | 1800 / 2900 | 1800 / 2900 | 1800 / 2900 | 1800 / 2900 |
| 11700 - 8300 | 11500 - 8450 | 11500 - 8450 | 12300 - 9300 | 12550 - 9550 | 14150 - 10600 | 11500 - 8450 |
| 4160 | 4160 | 4160 | 4160 | 4160 | 4600 | 4160 |
| 6050 - 12175 | 6050 - 12175 | 6050 - 12175 | 6050 - 12175 | 6050 - 12175 | 6050 - 12175 | 6050 - 12175 |
| ± 200 | ± 800 | ± 800 | ± 800 | ± 800 | ± 800 | ± 800 |
| ± 200 | -105 / 195 | -105 / 195 | -105 / 195 | -105 / 195 | -105 / 195 | -105 / 195 |
| ± 5 | ± 2 | ± 2 | ± 2 | ± 2 | ± 2 | ± 2 |
| 300 / 465 / 275 | 300 / 425 / 450 | 300 / 425 / 450 | 300 / 425 / 450 | 300 / 425 / 450 | 300 / 300 / 500 | 300 / 300 / 500 |
| 11800 / 13900 | 11500 / 13600 | 11500 / 13600 | 12650 / 13850 | 12900 / 14000 | 15200 / 15400 | 15900 / 15900 |
| 1500 | 1500 | 1500 | 2200 | 2600 | 2800 | 3250 |
| 8550 / 9900 | 8550 / 9850 | 8550 / 9850 | 9750 / 10400 | 10100 / 10750 | 11300 / 11300 | 12400 / 12400 |
| 24,5 / 22 | 26 / 23 | 25 / 22,5 | 25 / 22,5 | 25 / 22,5 | 24 / 20 | 24 / 20 |
| 24,5 / 22 | 26 / 23 | 25 / 22,5 | 25 / 22,5 | 25 / 22,5 | 24 / 20 | 24 / 20 |
| 0.38 / 0.35 / 0.23 | 0.38 / 0.35 / 0.23 | 0.38 / 0.35 / 0.23 | 0.38 / 0.35 / 0.23 | 0.37 / 0.34 / 0.22 | 0.35 / 0.33 / 0.17 | 0.35 / 0.33 / 0.17 |
| 0.35 / 0.40 | 0.35 / 0.40 | 0.35 / 0.40 | 0.35 / 0.40 | 0.35 / 0.40 | 0.25 / 0.35 | 0.25 / 0.35 |
| 25 / 20 | 24 / 18 | 24 / 18 | 23 / 17 | 23 / 17 | 22 / 16 | 22 / 16 |
| 300 / 246 | 260 / 214 | 260 / 214 | 260 / 214 | 260 / 214 | 260 / 214 | 260 / 214 |
| 256 - 294 | 256 - 294 | 256 - 294 | 256 - 294 | 256 - 294 | 256 - 294 | 256 - 294 |
| 1640 - 2172 | 1640 - 2172 | 1640 - 2172 | 1640 - 2172 | 1640 - 2172 | 1640 - 2172 | 1640 - 2172 |
| | | | Kessler D106 | | Kessler D111 | Kessler D111 |
| Yes / yes | Yes / yes | Yes / yes | Yes / yes | Yes / yes | Yes / yes | Yes / yes |
| Yes | Yes | Yes | Yes | Yes | Yes | Yes |
| 24 / 15 | 24 / 15 | 24 / 15 | 25 / 15 | 25 / 15 | 24 / 15 | 24 / 15 |
| 650 / 850 | 650 / 850 | 650 / 850 | 650 / 850 | 650 / 850 | 700 / 950 | 700 / 950 |
| 68 / 66 | 68 / 66 | 68 / 66 | 68 / 66 | 68 / 66 | 68 / 66 | 68 / 66 |
| 75 | 75 | 75 | 75 | 75 | 75 | 75 |
| 111 | 111 | 111 | 111 | 111 | 111 | 111 |

This publication is for general informational purposes only and we reserve the right at any time to alter the product design and specifications. No statement of this publication shall be construed as a warranty or condition, express or implied, as to any product, its fitness for any particular purpose, merchantability, quality or representation of the terms of any sales agreement.

TECHNICAL DATA

Reach stackers for container handling, 10 to 25 tons

| MODEL | | | SMV 108 TB6 | SMV 2115 TB3 | SMV 2518 TB3 | |
|---|--|------------------------|--|--|---------------------|---------------------|
| LIFTING DATA | Dimensions | Identifier | Units | | | |
| | Lifting capacity at load center LC1 / LC2 / LC3 (no jacks) | | tons | 10 / 8 / 5 | 21 / 15 / 5 | 25 / 18 / 8 |
| | Lifting capacity at load center LC1 / LC2 / LC3 (with jacks) | | tons | - | - | - |
| | Load centers in row 1 / 2 / 3 | LC1 / LC2 / LC3 | mm | 2700 / 3850 / 6350 | 1750 / 3850 / 6350 | 1750 / 3850 / 6350 |
| | Stacking height in row 1 (9'6" / 8'6") | | | 5 x 9'6" / 6 x 8'6" | 3 x 9'6" / 3 x 8'6" | 3 x 9'6" / 3 x 8'6" |
| | Spreader type, telescopic, locking | | | ELME 517 (20-40 ft) | ELME 817 (20-40 ft) | ELME 327 (20 ft) |
| | Lost load center to face of tires / jacks | L4 | mm | 700 | 750 | 750 |
| Wheelbase | L3 | mm | 5000 | 5500 | 5500 | |
| WEIGHT | Service weight | | kg | 39500 | 56600 | 50000 |
| | Axle pressure front LC1 (unloaded / rated load) | | kg | 21800 / 38600 | 29500 / 60100 | 24500 / 60900 |
| | Axle pressure rear LC1 (unloaded / rated load) | | kg | 23600 / 38900 | 34600 / 62200 | 27800 / 60900 |
| | Axle pressure front LC2 (unloaded / rated load) | | kg | 17700 / 10900 | 25100 / 15500 | 25500 / 14100 |
| | Axle pressure rear LC2 (unloaded / rated load) | | kg | 15900 / 8600 | 20000 / 7400 | 22200 / 7100 |
| WHEELS | Tire type | | | Pneumatic | Pneumatic | Pneumatic |
| | Tire dimension / ply rating, front & rear | | Inch | 14.00 x 24"/PR24 | 16.00 x 25"/PR32 | 16.00 x 25"/PR32 |
| | Rim dimensions, front & rear | | Inch | 10.00 x 24" | 11.25 x 25" | 11.25 x 25" |
| | Tire pressure, front / rear | | MPa | 0.9 / 0.9 | 0.9 / 0.9 | 0.9 / 0.9 |
| | Number of wheels, front / rear (X = driven) | | | 4X / 2 | 4X / 2 | 4X / 2 |
| | Track width, front / rear | T1 / T2 | mm | 3286 / 2290 | 2438 / 2656 | 2438 / 2656 |
| DIMENSIONS | Boom angle, min - max | α | deg | 0 - 66 | 0 - 47 | 0 - 47 |
| | Lifting height in twistlocks, min - max at LC1 | H1 - H2 | mm | 1150 - 16200 | 1200 - 11110 | 1200 - 11110 |
| | Lifting height in twistlocks, min - max at LC2 | H3 - H4 | mm | 1150 - 13700 | 1200 - 9000 | 1200 - 9000 |
| | Lifting height in twistlocks, min - max at LC3 | H5 - H6 | mm | 1150 - 11000 | 1200 - 7600 | 1200 - 7600 |
| | Boom height, min - max | H7 - H8 | mm | 3900 - 18600 | 4150 - 14300 | 4150 - 14300 |
| | Truck height over cabin / seat height | H9 - H10 | mm | 3300 - 2200 | 3400 - 2250 | 3400 - 2250 |
| | Sliding cabin stroke (manual / hydraulic) | L5 | mm | 1800 / 1800 | 1800 / 1800 | 1800 / 1800 |
| | Overall length, with - without spreader | L1 - L2 | mm | 10600 - 6650 | 10300 - 7300 | 10300 - 7300 |
| | Drive axle width | W1 | mm | 4100 | 3420 | 3420 |
| | Spreader width, min - max | W2 - W3 | mm | 6050 - 12175 | 6050 - 12175 | 6050 |
| | Spreader sideshift | SS | mm | ± 800 | ± 800 | ± 800 |
| | Spreader rotation | SR | deg | -105 / 195 | -105 / 195 | -105 / 195 |
| | Mechanical Pile Slope (side tilt / no power) | PS | deg | ± 2 | ± 2 | ± 2 |
| Ground clearance, front / mid / steering axle | C1 / C2 / C3 | mm | 300 / 450 / 220 | 300 / 375 / 200 | 300 / 375 / 200 | |
| Aisle width (with 20 ft / 40 ft container) | A1 / A2 | mm | 10500 / 14000 | 10400 / 13300 | 10400 | |
| Turning radius, inner | R1 | mm | 100 | 1400 | 1400 | |
| Turning radius, outer 20 ft / outer 40 ft | R2 / R3 | mm | 6500 / 8400 | 7550 / 9200 | 7550 | |
| PERFORMANCE | Drive speed forward, unloaded / at rated load | | km/h | 30 / 30 | 24 / 22 | 24 / 22 |
| | Drive speed reverse, unloaded / at rated load | | km/h | 30 / 30 | 24 / 22 | 24 / 22 |
| | Lifting speed, unloaded / at 40% load / at rated load | | m/s | 0.55 / 0.53 / 0.40 | 0.40 / 0.38 / 0.24 | 0.40 / 0.38 / 0.24 |
| | Lowering speed, unloaded / at rated load | | m/s | 0.45 / 0.45 | 0.45 / 0.45 | 0.45 / 0.45 |
| | Gradeability, at rated load, 0/2 km/h | | % / % | 29 / 23 | 31 / 21 | 31 / 21 |
| | Towing power, at rated load, 0/2 km/h | | kN / kN | 144 / 118 | 190 / 147 | 190 / 147 |
| DRIVELINE | Engine power (min - max) | EU2 / EU3b | kW | 180 - 201 | 180 - 201 | 180 - 201 |
| | Engine torque (min - max) | EU2 / EU3b | Nm | 990 - 1180 | 990 - 1180 | 990 - 1180 |
| | Transmission, gears forward + reverse | | | DANA 3+3 / ZF 4+3 | | |
| | Transmission type, function, shifting | | | Automatic transmission, torque converter, reverse protection, powershift | | |
| | Drive axle model | | | Kessler D81 | Kessler D91 | |
| | Driving brake system, type | | | Oil-cooled multiple wet disc brakes (WDB) | | |
| | Parking brake system, type | | | Dry single disc / spring release | | |
| Steering system / steering axle type | | | Hydraulic power steer / HD axle + double-acting cylinder | | | |
| OTHERS | Load-sensing hydraulics / power-on-demand | | Yes / yes | Yes / yes | Yes / yes | |
| | Safety, Monitoring & Overload System | | Yes | Yes | Yes | |
| | Hydraulic oil pressure, boom / spreader | | MPa | 23 / 14 | 24 / 15 | 24 / 15 |
| | Diesel / hydraulic tank volumes | | Lit | 430 / 600 | 430 / 600 | 430 / 600 |
| | Noise level inside cab (LM) DIN 45635 | EU2 / EU3b | dB(A) | 68 / 66 | 68 / 66 | 68 / 66 |
| | Noise level inside cab (LpAZ) EN 12053 | | dB(A) | 75 | 75 | 75 |
| Noise level outside (LWA) 2000/14/EC | | dB(A) | 110 | 110 | 110 | |

NOTE 1. TB models do not have support jacks

NOTE 2. Other lifting attachment combinations possible, check factory information

NOTE 3. Four lifting eyes on spreader are standard; extra ones can be provided plus container guides on one side of spreader

NOTE 4. Optional for laden handlers: Hydraulic Pile Slope ±6 deg and Powered Dampening Cylinders ±5 deg + tilt lock

NOTE 5. For available driveline combinations, see driveline chart and latest factory information

Reach stackers for intermodal handling, 41 to 45 tons

| SMV 4123 CB5 | SMV 4527 CB5 | SMV 4531 CB5 (CBX5) | SMV 4533 CB5 (CBX5) | SMV 4537 CB5 (CBX5) | SMV 4538 CB5 (CBX5) | SMV 4545 CB5 (CBX5) |
|--|---------------------|---------------------|---------------------|---------------------|---------------------|---------------------|
| 41 / 23 / 9 | 45 / 27 / 13 | 45 / 31 / 16 | 45 / 33 / 16 | 45 / 37 / 22 | 45 / 38 / 23 | 45 / 45 / 33 |
| - | - | 45 / 33 / 20 | 45 / 37 / 24 | 45 / 40 / 28 | 45 / 40 / 32 | 45 / 45 / 45 |
| 2000 / 3850 / 6350 | 1900 / 3850 / 6350 | 1900 / 3850 / 6350 | 2000 / 3850 / 6350 | 1800 / 3850 / 6350 | 1800 / 3850 / 6350 | 2275 / 3850 / 6350 |
| 5 x 9'6" / 5 x 8'6" | 5 x 9'6" / 5 x 8'6" | 5 x 9'6" / 6 x 8'6" | 5 x 9'6" / 5 x 8'6" | 5 x 9'6" / 5 x 8'6" | 5 x 9'6" / 5 x 8'6" | 5 x 9'6" / 5 x 8'6" |
| Toplift 4 x twistlocks, trailer lift 4 x lifting legs, extension 20-30-35-40 ft, 4 lifting eyes, safety locking (ELME 857) | | | | | | |
| 800 | 930 | 930 | 930 | 930 | 930 | 1025 |
| 6400 | 6400 | 6400 | 6400 | 7250 | 7500 | 8000 |
| 72500 | 77600 | 82200 | 87200 | 89500 | 90000 | 110000 |
| 43000 / 101900 | 44200 / 108900 | 44200 / 108900 | 48000 / 112700 | 48000 / 110400 | 48000 / 109200 | 54000 / 117600 |
| 48700 / 88500 | 50200 / 97500 | 50200 / 104200 | 53600 / 110400 | 53500 / 114800 | 53700 / 116100 | 58400 / 131000 |
| 29500 / 11600 | 33400 / 13700 | 38000 / 18300 | 39200 / 19500 | 41500 / 24100 | 42000 / 25800 | 56000 / 37400 |
| 23800 / 7000 | 27400 / 7100 | 32000 / 9000 | 33600 / 8900 | 36000 / 11700 | 36300 / 11900 | 51600 / 24000 |
| Pneumatic | Pneumatic | Pneumatic | Pneumatic | Pneumatic | Pneumatic | Pneumatic |
| 18.00 x 25"/PR40 | 18.00 x 33"/PR36 | 18.00 x 33"/PR36 | 18.00 x 33"/PR36 | 18.00 x 33"/PR36 | 18.00 x 33"/PR36 | 21.00 x 35"/PR40 |
| 13.00 x 25" | 13.00 x 33" | 13.00 x 33" | 13.00 x 33" | 13.00 x 33" | 13.00 x 33" | 15.00 x 35" |
| 1.0 / 1.0 | 1.0 / 1.0 | 1.0 / 1.0 | 1.0 / 1.0 | 1.0 / 1.0 | 1.0 / 1.0 | 1.0 / 1.0 |
| 4X / 2 | 4X / 2 | 4X / 2 | 4X / 2 | 4X / 2 | 4X / 2 | 4X / 2 |
| 3030 / 2911 | 3030 / 2911 | 3030 / 2911 | 3030 / 2911 | 3030 / 2911 | 3030 / 2911 | 3227 / 3420 |
| 0 - 62 | 0 - 62 | 0 - 62 | 0 - 62 | 0 - 61 | 0 - 59 | 0 - 55 |
| 650 - 14800 | 800 - 14900 | 800 - 14900 | 800 - 14900 | 800 - 14900 | 800 - 14900 | 1300 - 15000 |
| 650 - 13000 | 800 - 13000 | 800 - 13000 | 800 - 13000 | 800 - 13000 | 800 - 13000 | 1300 - 14100 |
| 650 - 10100 | 800 - 10000 | 800 - 10000 | 800 - 10000 | 800 - 9900 | 800 - 9900 | 1300 - 11100 |
| 4500 - 18200 | 4675 - 18350 | 4675 - 18350 | 4775 - 18400 | 4775 - 18500 | 4975 - 18500 | 5100 - 18800 |
| 3650 - 2450 | 3800 - 2650 | 3800 - 2650 | 3800 - 2650 | 3800 - 2650 | 3800 - 2650 | 4050 - 2900 |
| 2900 | 2900 | 2900 | 2900 | 2900 | 2900 | 2900 |
| 11500 - 8300 | 11550 - 8450 | 11550 - 8450 | 11550 - 8450 | 12300 - 9300 | 12550 - 9550 | 14150 - 10600 |
| 4160 | 4160 | 4160 | 4160 | 4160 | 4160 | 4600 |
| 6050 - 12175 | 6050 - 12175 | 6050 - 12175 | 6050 - 12175 | 6050 - 12175 | 6050 - 12175 | 6050 - 12175 |
| ± 800 | ± 800 | ± 800 | ± 800 | ± 800 | ± 800 | ± 800 |
| -105 / 195 | -105 / 195 | -105 / 195 | -105 / 195 | -105 / 195 | -105 / 195 | -105 / 195 |
| ± 6 | ± 6 | ± 6 | ± 6 | ± 6 | ± 6 | ± 6 |
| 300 / 465 / 275 | 300 / 465 / 450 | 300 / 465 / 450 | 300 / 425 / 450 | 300 / 425 / 450 | 300 / 425 / 450 | 300 / 300 / 500 |
| 11500 / 13600 | 11500 / 13600 | 11500 / 13600 | 11500 / 13600 | 12650 / 13850 | 12900 / 14000 | 15200 / 15400 |
| 1500 | 1500 | 1500 | 1500 | 2200 | 2200 | 2800 |
| 8550 / 9850 | 8550 / 9850 | 8550 / 9850 | 8550 / 9850 | 9750 / 10400 | 10100 / 10750 | 11300 / 11300 |
| 24.5 / 22 | 26 / 23 | 26 / 23 | 25 / 22.5 | 24.5 / 22 | 24.5 / 22 | 25 / 20 |
| 24.5 / 22 | 26 / 23 | 26 / 23 | 25 / 22.5 | 24.5 / 22 | 24.5 / 22 | 25 / 20 |
| 0.38 / 0.35 / 0.23 | 0.38 / 0.35 / 0.23 | 0.38 / 0.35 / 0.23 | 0.38 / 0.35 / 0.23 | 0.38 / 0.35 / 0.23 | 0.38 / 0.35 / 0.23 | 0.35 / 0.33 / 0.17 |
| 0.35 / 0.40 | 0.35 / 0.40 | 0.35 / 0.40 | 0.35 / 0.40 | 0.35 / 0.40 | 0.35 / 0.40 | 0.25 / 0.35 |
| 25 / 20 | 24 / 18 | 24 / 18 | 24 / 18 | 23 / 17 | 23 / 17 | 22 / 16 |
| 300 / 246 | 260 / 214 | 260 / 214 | 260 / 214 | 260 / 214 | 260 / 214 | 260 / 214 |
| 256 - 294 | 256 - 294 | 256 - 294 | 256 - 294 | 256 - 294 | 256 - 294 | 256 - 294 |
| 1640 - 2172 | 1640 - 2172 | 1640 - 2172 | 1640 - 2172 | 1640 - 2172 | 1640 - 2172 | 1640 - 2172 |
| DANA 4 + 4 / ZF 4 + 3 | | | | | | |
| Fully automatic transmission, torque converter, reverse protection, powershift | | | | | | |
| Kessler D102 | | | | Kessler D106 | | Kessler D111 |
| Oil-cooled multiple wet disc brakes (WDB) | | | | | | |
| Dry single disc / spring release | | | | | | |
| Hydraulic power steer / HD axle + double-acting cylinder | | | | | | |
| Yes / yes | Yes / yes | Yes / yes | Yes / yes | Yes / yes | Yes / yes | Yes / yes |
| Yes | Yes | Yes | Yes | Yes | Yes | Yes |
| 24 / 15 | 24 / 15 | 24 / 15 | 24 / 15 | 25 / 15 | 25 / 15 | 24 / 15 |
| 650 / 850 | 650 / 850 | 650 / 850 | 650 / 850 | 650 / 850 | 650 / 850 | 700 / 950 |
| 68 / 66 | 68 / 66 | 68 / 66 | 68 / 66 | 68 / 66 | 68 / 66 | 68 / 66 |
| 75 | 75 | 75 | 75 | 75 | 75 | 75 |
| 111 | 111 | 111 | 111 | 111 | 111 | 111 |

NOTE 1. CB models do not have support jacks / CBX models have support jacks for increased capacity and lower ground pressure

NOTE 2. Other lifting attachment combinations possible, check factory information

NOTE 3. Four lifting eyes on spreader are standard; extra ones can be provided plus container guides on one side of spreader

NOTE 4. Standard for intermodal handlers: Hydraulic Pile Slope ±6 deg and Powered Dampening Cylinders ±5 deg + tilt lock

NOTE 5. For available driveline combinations, see driveline chart and latest factory information



INDUSTRIAL
CRANES



NUCLEAR
CRANES



PORT
CRANES



HEAVY-DUTY
LIFT TRUCKS




SERVICE



MACHINE
TOOL
SERVICE



Konecranes is a world-leading group of Lifting Businesses™ offering lifting equipment and services that improve productivity in a wide variety of industries. The company is listed on NASDAQ OMX Helsinki Ltd (symbol: KCR1V). With over 11,500 employees at more than 600 locations in almost 50 countries we have the resources, technology and determination to deliver on the promise of Lifting Businesses™.

© 2012 Konecranes. All rights reserved. "Konecranes", "Lifting Businesses" and  are registered trademarks of Konecranes.



Forkliftcenter B.V.

Hornweg 18, 1045 AR Amsterdam, The Netherlands

Tel. +31 20 497 41 01 E-mail: sales@forkliftcenter.com

www.forkliftcenter.com