



**STRONG PARTNERS.
TOUGH TRUCKS.™**



HIGH CAPACITY FORKLIFT TRUCKS

H25XMS-9, H30XMS-9, H32XMS-9
25.000 – 32.000 kg @ 900 mm

H25XM-12, H28XM-12, H30XM-12, H32XM-12
25.000 – 32.000 kg @ 1200 mm

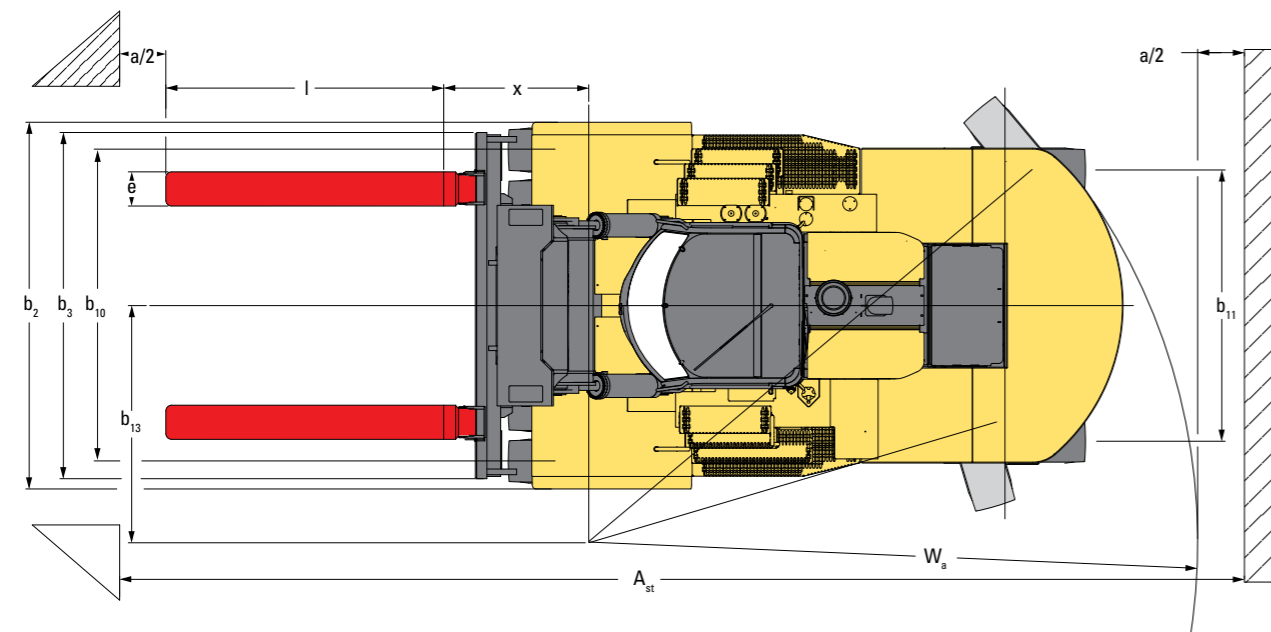
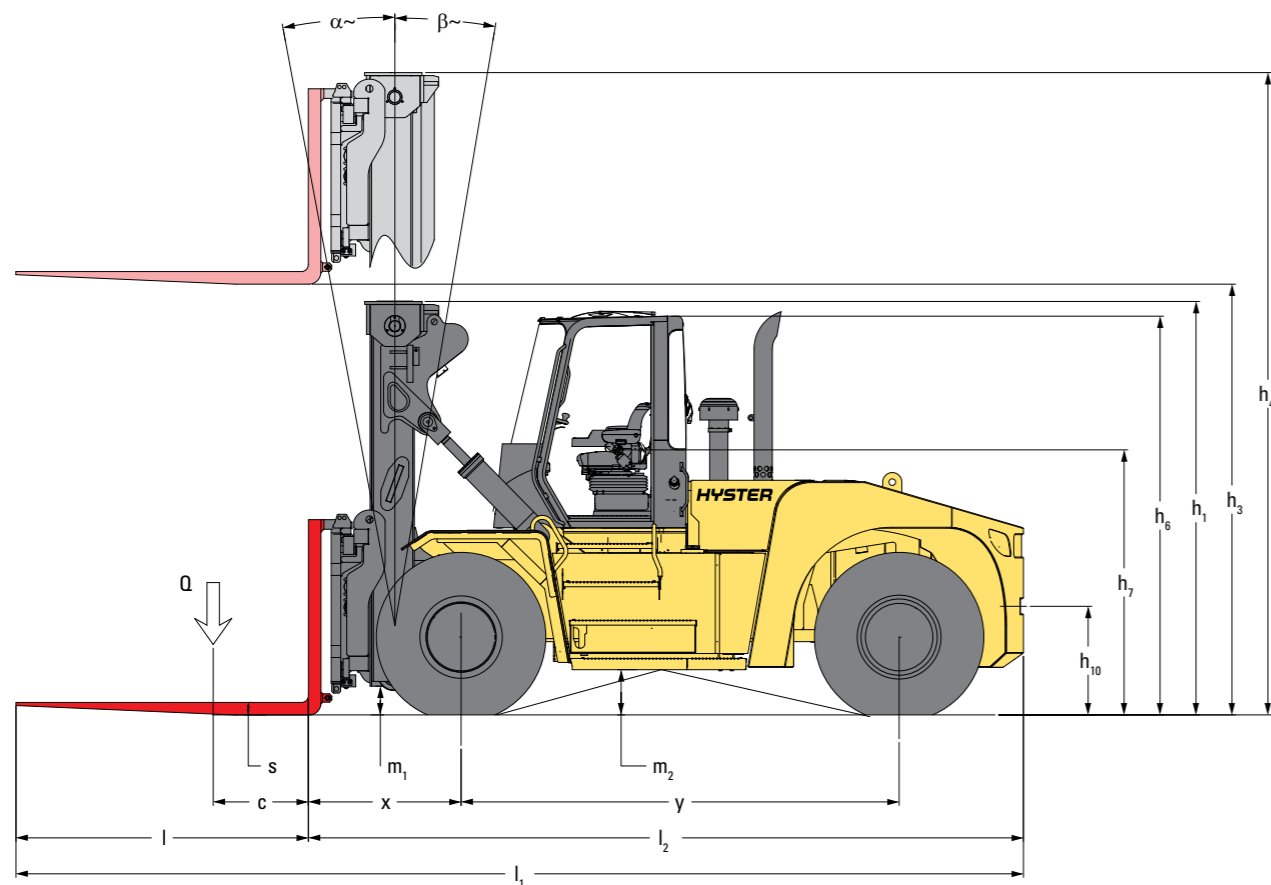
CONTAINER HANDLING TRUCKS

H28XM-16CH, H32XM-16CH
26.400 - 31.000 kg @ 1600 mm



TRUCK DIMENSIONS

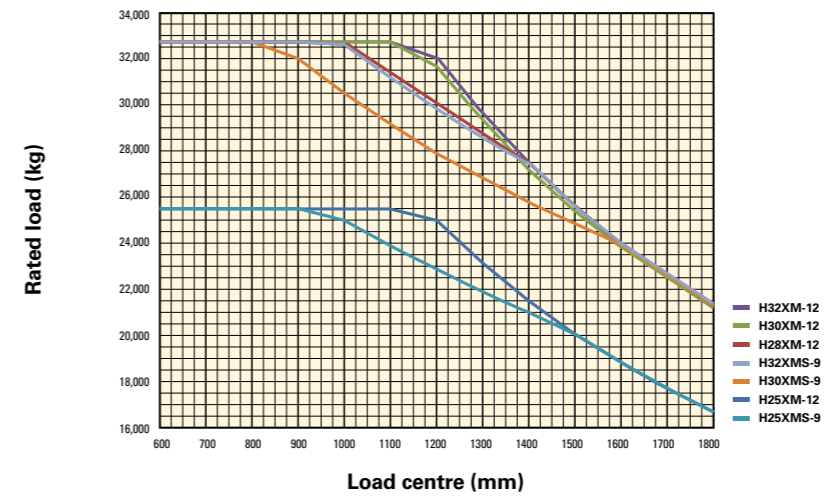
FORK LIFT TRUCKS



- = Centre of gravity of unladen truck
- $A_{ST} = W_s + x + l_s + a$ (IF $b_{12}/2 < b_{13}$)
- $A_{ST} = W_s + (l_s - x)^2 + (b_{12} - b_{13})^2 + a$ (IF $b_{12}/2 > b_{13}$)
- a = Minimum operating clearance = 10% of A_{ST}
(VDI standard = 200 mm, BITA recommendation = 300 mm)
- l_s = Load length
- b_{12} = Load width

CAPACITY RATINGS

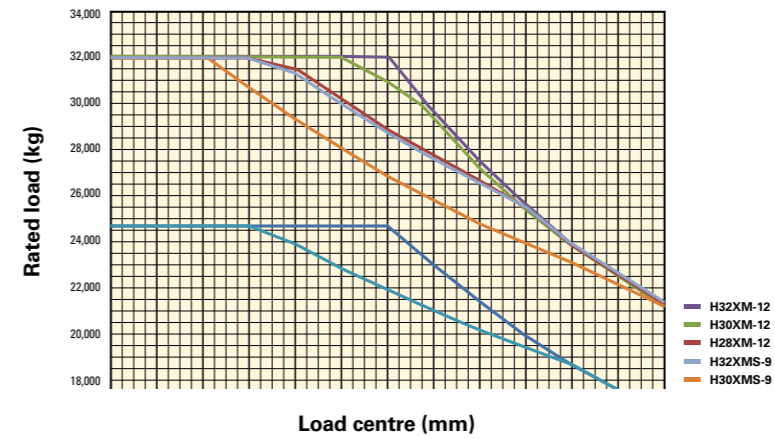
STANDARD PIN TYPE CARRIAGE



Load centre: Distance from front of forks to centre of gravity of load.

Rated Load: Based on 2 stage NFL mast 6095 mm lift height Standard pin type carriage with 105 x 280 x 2440 forks on H25XM models and 105 x 300 x 2440 forks on H28-32XM models.

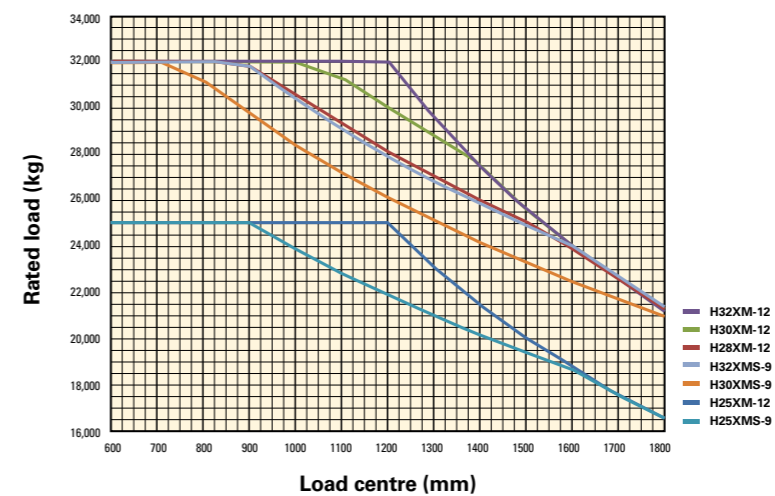
SIDESHIFT PIN TYPE CARRIAGE



Load centre: Distance from front of forks to centre of gravity of load.

Rated Load: Based on 2 stage NFL mast 6095 mm lift height Sideshift pin type carriage with 105 x 280 x 2440 forks on H25XM models and 105 x 300 x 2440 forks on H28-32XM models.

DF-SS-FP CARRIAGE



Load centre: Distance from front of forks to centre of gravity of load.

Rated Load: Based on 2 stage NFL mast 6095 mm lift height DF-SS-FP carriage with 105 x 280 x 2440 forks on H25XM models and 105 x 300 x 2440 forks on H28-32XM models.

EQUIPMENT AND WEIGHT FORK LIFT TRUCKS:

- Weights (line 2.1) are based on the following specifications: Complete truck with Pneumatic tyres, 4265 mm BOF (4370 mm TOF) 2-Stage Vista Mast, Dual-function Sideshift-forkpositioners carriage and Hook-type forks 2440 mm long.

NOTES:

Specifications are affected by the conditions of the vehicle and how it is equipped, as well as the nature and condition of the operating area. If these specifications are critical, the proposed application should be discussed with your dealer

- Unladen with new tyres
- † Bottom of forks
- Full suspension seat in depressed position
- ≡ Length without carriage / spreader
- ‡ Forks in alternative position
- ⊙ Distance centre truck to centre of internal turning radius
- * at 1.6 km/h.
- ✱ at stall.
- † Gradeability figures are provided for comparison of tractive performance, but are not intended to endorse the operation of vehicle on the stated inclines. Follow instructions in the operating manual regarding operation on inclines.
- * Measured according to the test cycles and based on the weighting values contained in EN12053.

NOTICE

Care must be exercised when handling elevated loads. When the carriage and/or load is elevated, truck stability is reduced. It is important that mast tilt in either direction be kept to a minimum when loads are elevated.

Operators must be trained and adhere to the instructions contained in the Operating Manual.

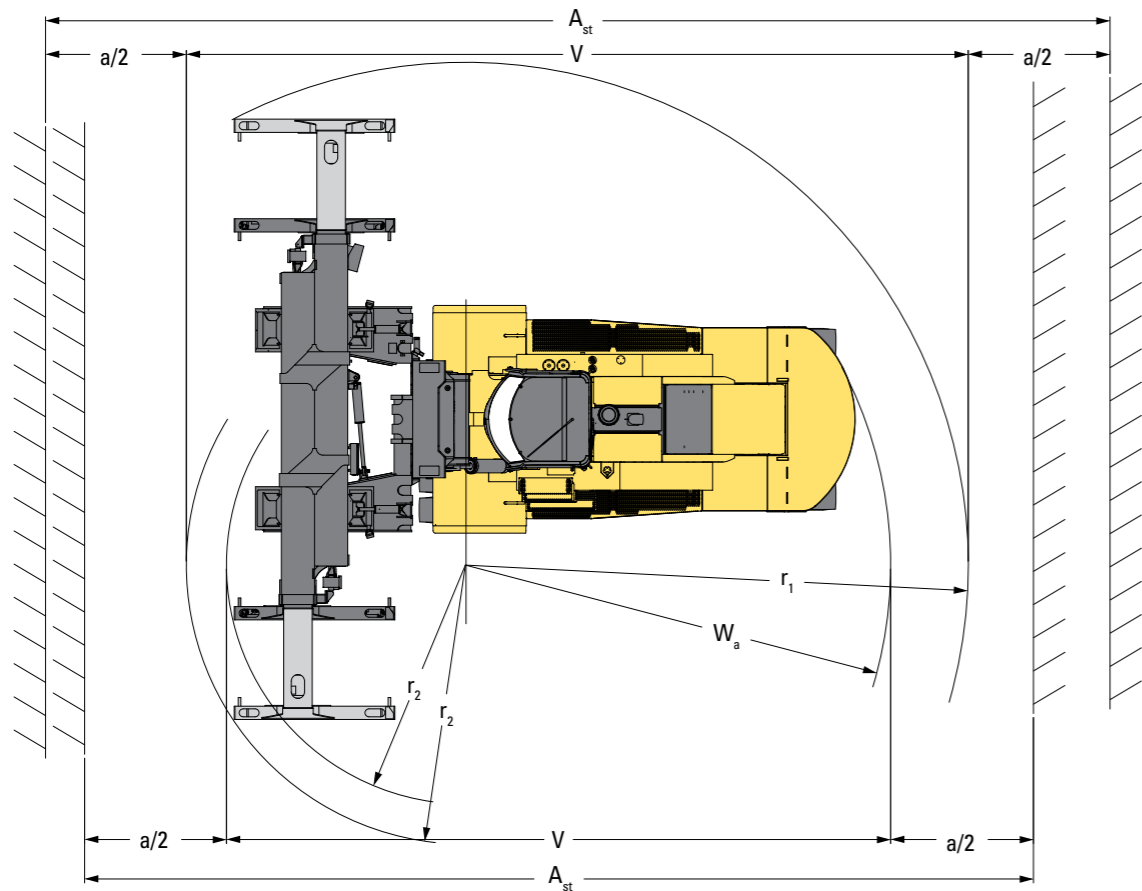
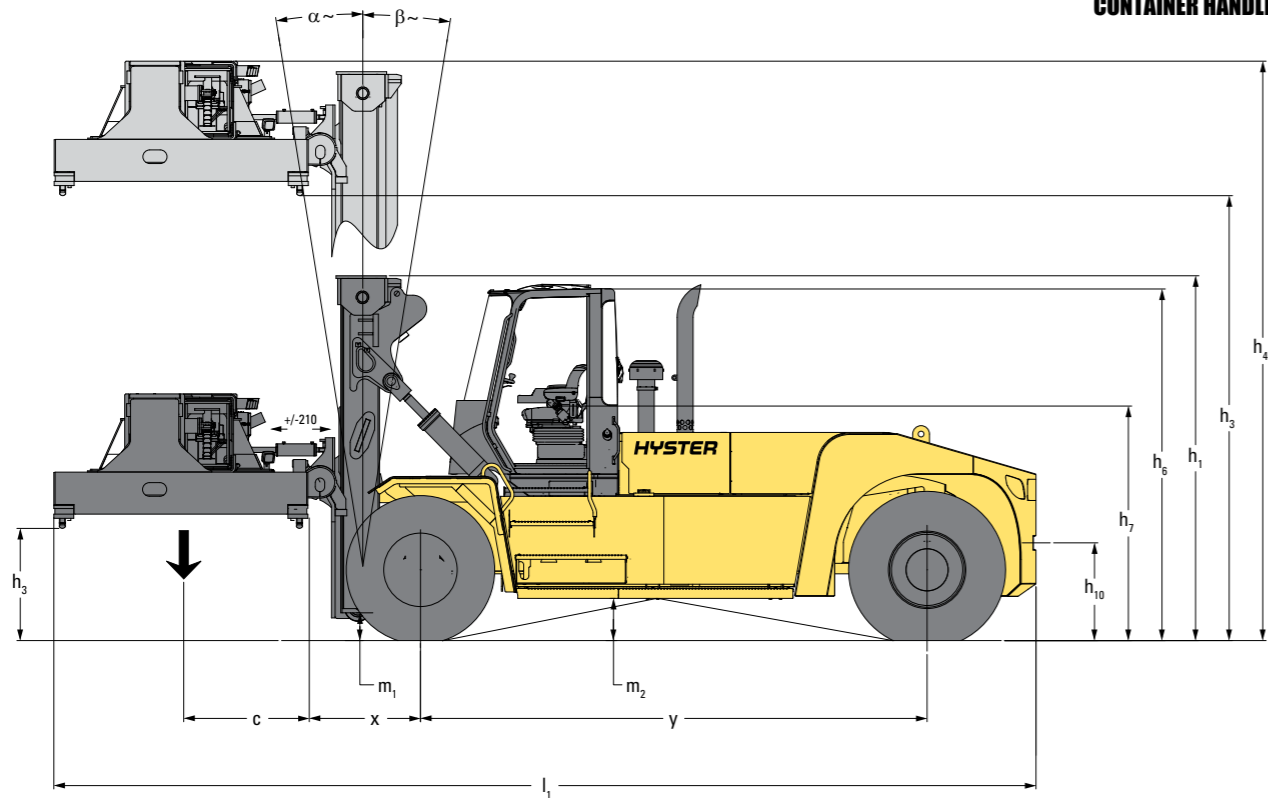
Hyster products are subject to change without notice. Lift trucks illustrated may feature optional equipment.

CE Safety:

This truck conforms to the current EU requirements.

TRUCK DIMENSIONS

CONTAINER HANDLERS



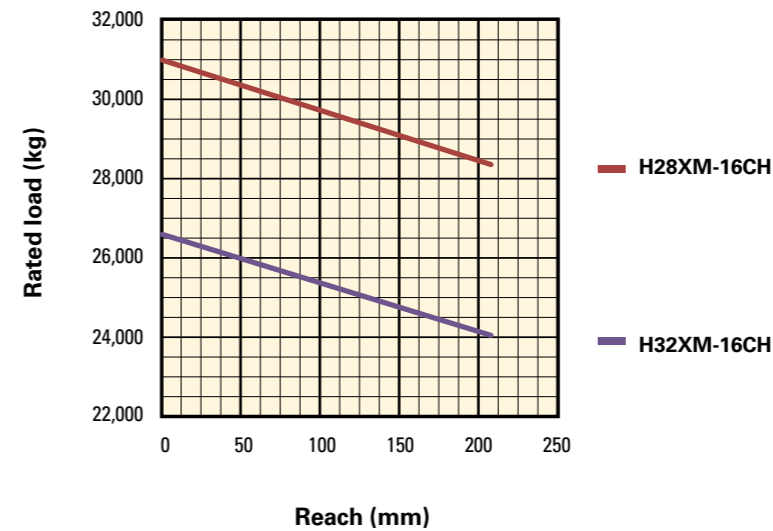
- r_1 = radius of swing of container rear corner
- r_2 = radius of swing of container front corner
- W_a = outside turning radius of truck
- a = total operating clearance, $a/2$ is operating clearance at each side
- a = 10% of V
- V = (theoretical) 90° stacking aisle width, no intrusive stacking and width clearance
- $A_{ST} = V + a$
- $A_{ST} = V + 10\%$ of V

MAST AND CAPACITY INFORMATION

Mast	Stacking height 8'6" - 9'6"	Lift height h_2 (mm)	Min. under twistlock h_{12} (mm)	Max. under twistlock $(h_1 + h_{12})$ (mm)	Lowered height h_1 (mm)	Extended height h_2 (mm)	Side shift b_2 (mm)	Tilt fwd/bwd (°)	Overall width b_1 (mm)	H28XM-16CH	
										capacity spreader retracted	capacity spreader retracted
										c1 @ 1430mm	c1 @ 1640mm
2 stage NFL	2 high 8'6"	6,115	1,239	7,354	5,659	8,716	217	6/10	3,340	26,400	24,120
	2 high 9'6"	6,115	1,239	7,354	5,659	8,716	217	6/10	3,340	26,400	24,120
	3 high 9'6"	9,145	1,239	10,384	7,174	11,746	217	6/10	3,340	26,300	23,680
	4 high 8'6"	9,755	1,239	10,994	7,479	12,356	217	6/10	3,340	25,740	23,380

Mast	Stacking height 8'6" - 9'6"	Lift height h_2 (mm)	Min. under twistlock h_{12} (mm)	Max. under twistlock $(h_1 + h_{12})$ (mm)	Lowered height h_1 (mm)	Extended height h_2 (mm)	Side shift b_2 (mm)	Tilt fwd/bwd (°)	Overall width b_1 (mm)	H32XM-16CH	
										capacity spreader retracted	capacity spreader retracted
										c1 @ 1430mm	c1 @ 1640mm
2 stage NFL	2 high 8'6"	6,115	1,239	7,354	5,659	8,716	217	6/10	3,340	31,000	28,200
	2 high 9'6"	6,115	1,239	7,354	5,659	8,716	217	6/10	3,340	31,000	28,200
	3 high 9'6"	9,145	1,239	10,384	7,174	11,746	217	6/10	3,340	31,000	27,800
	4 high 8'6"	9,755	1,239	10,994	7,479	12,356	217	6/10	3,340	30,640	27,720

RATED CAPACITY



Load centre:

Distance from front of forks to centre of gravity of load

Rated Load: Based on 2 stage NFL mast 6115 mm lift height for container handling, dedicated carriage for container handling and 20-40' extendable container attachment

EQUIPMENT AND WEIGHT CONTAINER HANDLERS:

● Weights (line 2.1) are based on the following specifications: Complete truck with Cab, Pneumatic tyres, 6095 mm BOF (6200 mm TOF) 2-Stage Vista Mast, Dedicated carriage and Telescopic 20'-40' ISO Container Spreader.

❖ Spreader retracted / extended
 ⚙ Centre of drive axle to front face of spreader

○ Unladen with new tyres
 † Bottom of forks

● Full suspension seat in depressed position
 † Minimum height of twistlocks

⊙ Distance centre truck to centre of internal turning radius

* at 1.6 km/h.
 ✖ at stall.

† Gradeability figures are provided for comparison of tractive performance, but are not intended to endorse the operation of vehicle on the stated inclines. Follow instructions in the operating manual regarding operation on inclines.

* Measured according to the test cycles and based on the weighting values contained in EN12053.

$A_{st} = W_a + x + b + a$

(see line 4.33, page 2 & 3)

a = Minimum operating clearance (VDI standard = 200mm, BITA recommendation = 300mm)

b = Load length
 r_1 = radius of swing of container rear corner
 r_2 = radius of swing of container front corner
 W_a = outside turning radius of the truck

V = theoretical 90° stacking aisle, no intrusive stacking

$V = r_2 + \text{the larger of } r_1 \text{ or } W_a$

a = total operating clearance, $a/2$ is operating clearance at each side
 a = according VDI: 200 mm (100 mm each side)

a = according FEM TN01 recommendation: 10% of V (5% of V at each side)

A_{st} = practical 90° stacking aisle, no intrusive stacking and with clearance
 $A_{st} = V + a$. For data see line 4.34

NOTICE

Care must be exercised when handling elevated loads. When the carriage and/or load is elevated, truck stability is reduced. It is important that mast tilt in either direction be kept to a minimum when loads are elevated.

Operators must be trained and adhere to the instructions contained in the Operating Manual.

Hyster products are subject to change without notice. Lift trucks illustrated may feature optional equipment.

CE Safety:

This truck conforms to the current EU requirements.

FRONT END EQUIPMENT



2 stage NFL Mast with maximum fork height of 3050mm (H25XM)



2 stage NFL Mast with maximum fork height of 3655mm (H25XM)



2 stage NFL Mast with maximum fork height of 4265mm (H25XM)



2 stage NFL Mast with maximum fork height of 4875mm (H25XM)



2 stage NFL Mast with maximum fork height of 6095mm (H25XM)



2 stage NFL Mast with maximum fork height of 9145mm (H25XM)



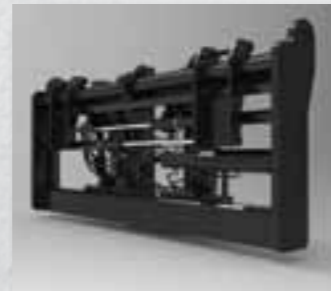
Standard Pin Type Carriage (H25XM)



Pin Type Carriage with individual Fork Positioner (H25XM)



Apron Pin Type Side Shift carriage (H25XM)



Apron Pin Type Side Shift carriage with individual fork positioner (H25XM)

FRONT END EQUIPMENT



2 stage NFL Mast with maximum fork height of 2475mm (H28-32XM)



2 stage NFL Mast with maximum fork height of 3050mm (H28-32XM)



2 stage NFL Mast with maximum fork height of 3655mm (H28-32XM)



2 stage NFL Mast with maximum fork height of 4265mm (H28-32XM)



2 stage NFL Mast with maximum fork height of 6075mm (H28-32XM)



2 stage NFL Mast with maximum fork height of 9145mm (H28-32XM)



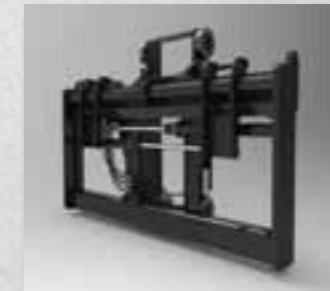
2 stage NFL Mast with maximum fork height of 6095mm (H28-32XM)



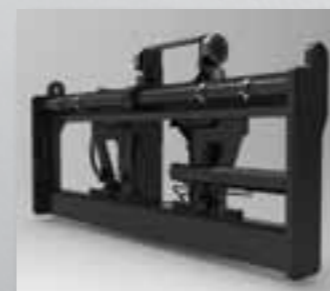
2 stage NFL Mast with maximum fork height of 9755mm (H28-32XM)



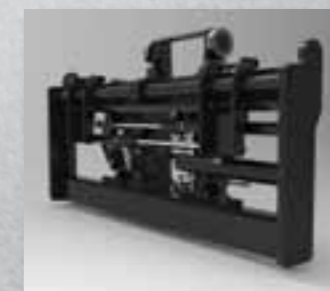
Standard Pin Type Carriage (H28-32XM)



Pin Type Carriage with individual Fork Positioner (H28-32XM)



Apron Pin Type Side Shift carriage (H28-32XM)



Apron Pin Type Side Shift carriage with individual fork positioner (H28-32XM)

STANDARD EQUIPMENT

- Cummins QSB 6.7L 194 / max 201 KW @ 2.000 rpm Turbo Diesel Engine
 - Stage IV Compliant
 - ECO-eLo / HiP performance modes
 - Hibernate Idle
 - Hydraulically driven cooling fan
- ZF WG 211 5 speed forward / 3 speed reverse Hydrodynamic Transmission
- Mono mast with maximum lift height of 2.745mm with 5169mm overall lowered height (H25XM)
- Mono mast with maximum lift height of 2.745mm with 5265mm overall lowered height (H28-32XM)
- 2 stage NFL Mast with maximum fork height of 3655mm with 3794mm overall lowered height (H25XM)
- 2 stage NFL Mast with maximum fork height of 3655mm with 3919mm overall lowered height (H28-32XM)
- 3040 mm wide DF side shift & Fork positioning carriage, hook type mount (H25XM)
- 3200 mm wide DF side shift & Fork positioning carriage, hook type mount (H28-32XM)
- 280 x 105 x 2.440 mm long hook type forks (H25XM)
- 300 x 105 x 2.440 mm long hook type forks (H28-32XM)
- 2 stage NFL 6.115 mm Mast with maximum Spreader lift of 7354mm (H28-32CH)
- Dedicated carriage for Container handling for 1220-1430 mm load centre (H28-32CH)
- ELME 812 ISO Top Lift Spreader (H28-32CH)
- Wet disc brakes
- Sy-Klone spinner type heavy duty air intake pre-cleaner
- Axle Tech PRC 1794 heavy duty planetary drive axles (H25XM)
- Axle Tech PRC 3806 heavy duty planetary drive axles H28-32XM
- Steer axle with hydrostatic power steering
- DANFOSS dual piston pump 140 ccm
- Powertrain protection system for engine and transmission; high temperature or low oil pressure
- On-demand load-sensing hydraulic system featuring VDP technology
- Up to 6-way hydraulic controls with 4 Levers and Switch combination, alternative Joystick control
- Hydraulic Control Joystick (H28-32CH)
- CANbus electrical control system for engine, transmission and hydraulics
- 14.00 - 24 28PR bias ply treaded load pneumatic drive and steer tyres (H25XM)
- 16.00 - 25 32PR bias ply treaded PR E4 load pneumatic drive and steer tires (H28-32XM)
- Directional control lever with direction change interlock system
- Mast tilt: 6° forward / 10° back
- Lockable battery disconnect switch
- 120 amp alternator
- Open operator compartment with integral overhead guard, includes:
 - seatside lever and switch hydraulic control
 - multifunction display panel
 - interior wide angle mirrors
 - handrails for operator entry and exit
 - telescoping and tilting steering column
 - floor mat
 - isolated mounting for low noise and vibration
 - full-suspension vinyl seat with integrated, adjustable armrest and seat belt
 - exterior wide angle mirrors, mounted to handrails
- Operator restraint system
- Operator presence system
- Electronic horn - 105 dB(A)
- Visible alarm / amber strobe light
- Self adjustable back up alarm, volume > 5dB(A) ambient
- 24V electrical system
- Tilting operator compartment for service access - manual operation
- Light Kit 1:
 - rear ward cluster with LED stop, reverse & direction light
 - 2 x Halogen working lights mounted on rear of the cab
 - 2 x Halogen drive lights mounted on front fender
 - direction and position light front of fender
- Steering wheel with spinner knob
- Steer wheel nut protection
- Non-lockable diesel fuel cab
- Literature package: operator's manual, service manual, parts manual
- 12 months / 2,000 hours manufacturer's warranty

OPTIONAL EQUIPMENT

- Masts: various 2-stage lift heights available
 - Various side shifting carriages and fork positioners
 - Coil Ram - pin carriage mounted or hook carriage mounted
 - Various hydraulic valve control groups
 - Multifunction joystick control
 - MONOTROL® pedal direction control with direction change interlock system
 - Mast tilt: 15° forward / 10° back
 - Tyres – Drive and Steer
 - 14.00 - 24 Solid (H25XM)
 - 14.00 - R24 MICHELIN XZM radial (H25XM)
 - 14.00 - R24 Trelleborg radial (H25XM)
 - 16.00 - 25 Solid (H28-32XM)
 - 16.00 - R25 MICHELIN XZM radial (H28-32XM)
 - 16.00 - R25 GOODYEAR EV-4S Slick (H28-32XM)
 - Front and rear mud flaps
 - Enclosed Cab with or without Air Conditioning includes:
 - Seat-Side Hydraulic Control Levers
 - Multifunction Display Panel
 - Interior Wide Angle Mirrors
 - Telescoping & Tilting Steering Column
 - Floor Mat
 - 24-12V DC/DC Converter
 - I - style Front screen Wiper
 - H - style Front screen Wiper
 - Heater
 - Cab options
 - Temperature controller
 - Air conditioner, manual controlled
 - Air conditioner, automatically controlled
 - High Performance Air conditioner, manual controlled
 - High Performance Air conditioner, automatically controlled
 - Reading light
 - Top and rear sun shades
 - Trainer seat
 - Recirculation fan
 - IT console for on-board computer
 - Rear locking console
 - Heated TOP Window
 - Engine start interlock
 - Radio preparation, inclusive wire, two speakers and antenna
 - Rain top (OHG only)
 - Wire mesh protection guard on Top of cab
 - External Mirror right and left
 - Seats
 - Mechanical, Full Suspension High backrest Vinyl or Cloth Seat
 - Pneumatic, Full Suspension Vinyl or Cloth Seat
 - Pneumatic, Full Suspension High backrest Vinyl or Cloth Seat
 - Deluxe Air Suspended Full Suspension Cloth Seat
 - Heated Deluxe Air Suspended Full Suspension Cloth Seat
 - 3-point seat belt for Deluxe Seat
 - Powered Tilt Operator Compartment
 - Air Horn
 - Various Light Kits
 - Various HID (High Intensity Discharge - Xenon) and halogen light kits available
 - Hydraulic accumulator
 - Hydraulic temperature protection
 - Pressure compensated lowering
 - Lifting eyes
 - Engine pre-heater 1.500 W / 230 Volt AC
 - NATO Start aid connector (24V)
 - Mast tilt indicator
 - Traction speed limiter
 - Empty seat engine shutdown
 - Lockable diesel fuel cap
 - Automatic greasing system
 - Centralized greasing provision for mast chain sheaves (available on limited masts)
- Other options available through Special Products Engineering Development (SPED). Contact Hyster for details.

STRONG PARTNERS. TOUGH TRUCKS.™

FOR DEMANDING OPERATIONS, EVERYWHERE.

Hyster supplies a complete range of warehouse equipment, IC and electric counterbalanced trucks, container handlers and reach stackers. Hyster is committed to being much more than a lift truck supplier.

Our aim is to offer a complete partnership capable of responding to the full spectrum of material handling issues: Whether you need professional consultancy on your fleet management, fully qualified service support, or reliable parts supply, you can depend on Hyster.

Our network of highly trained dealers provides expert, responsive local support. They can offer cost-effective finance packages and introduce effectively managed maintenance programmes to ensure that you get the best possible value. Our business is dealing with your material handling needs so you can focus on the success of your business today and in the future.





HYSTER EUROPE

Centennial House, Frimley Business Park, Frimley, Surrey, GU16 7SG, England.

Tel: +44 (0) 1276 538500



 www.hyster.eu  infoeurope@hyster.com  [/HysterEurope](https://www.facebook.com/HysterEurope)  [@HysterEurope](https://twitter.com/HysterEurope)  [/HysterEurope](https://www.youtube.com/HysterEurope)  www.hyster-bigtrucks.com

HYSTER  and FORTENS are registered trademarks in the European Union and certain other jurisdictions. MONOTROL is a registered trademark, and DURAMATCH and  are trademarks in the United States and in certain other jurisdictions. Hyster products are subject to change without notice. Lift trucks illustrated may feature optional equipment. A division of NACCO Materials Handling Limited.