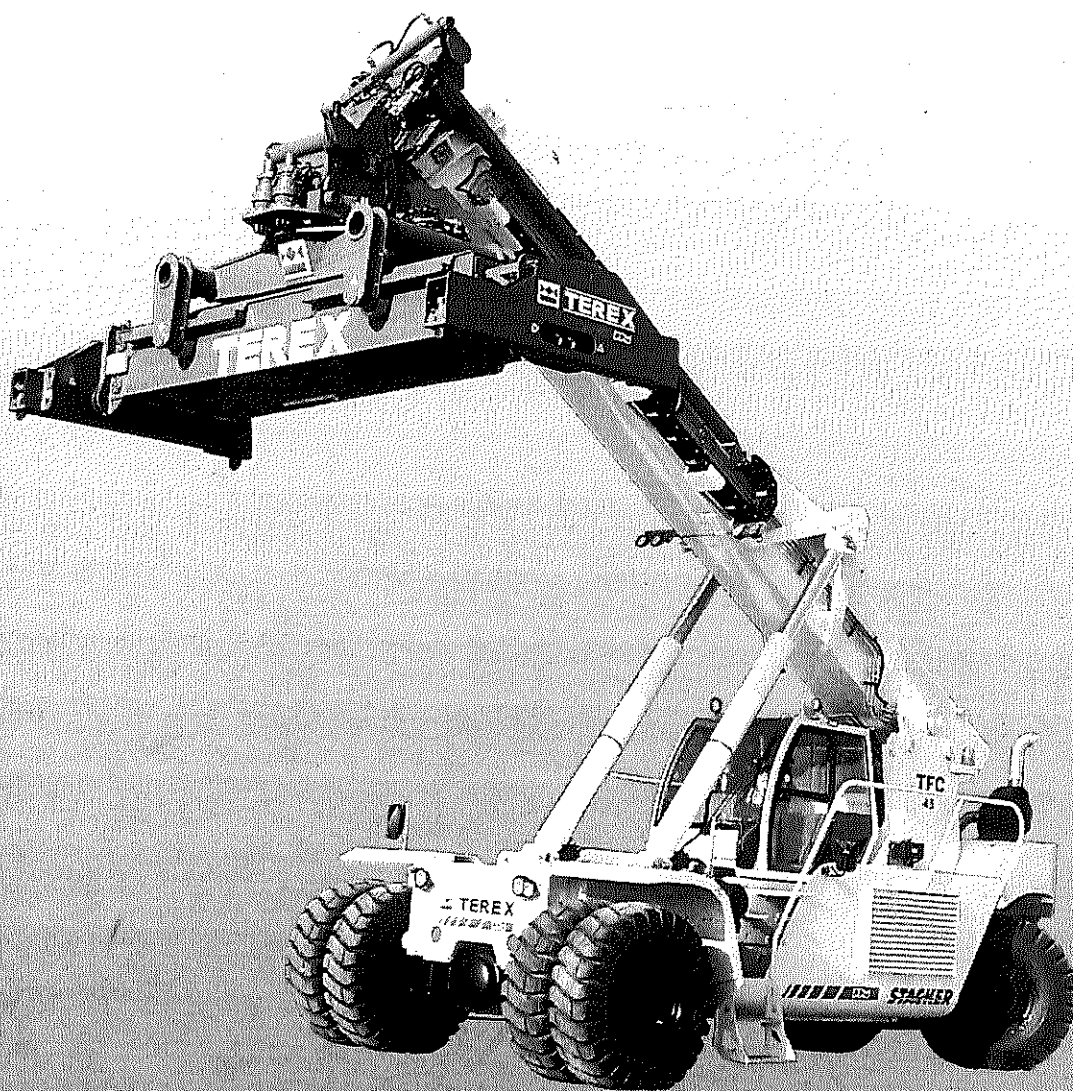


TFC 45 | SUPER STACKER

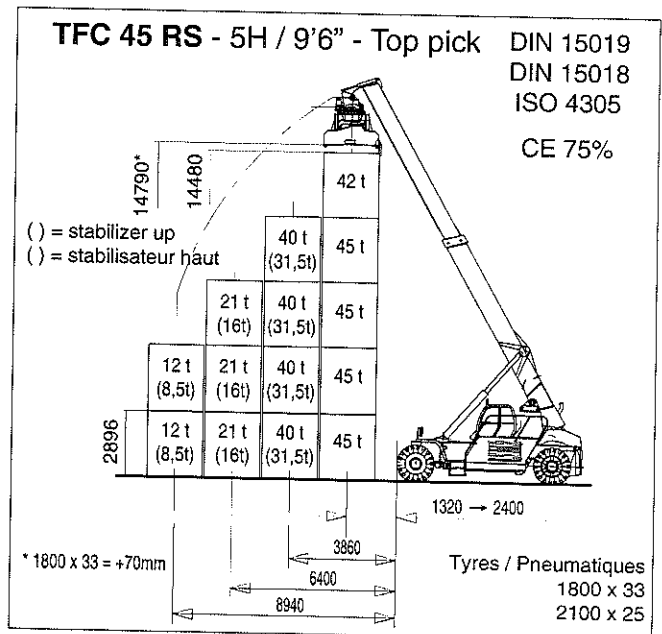
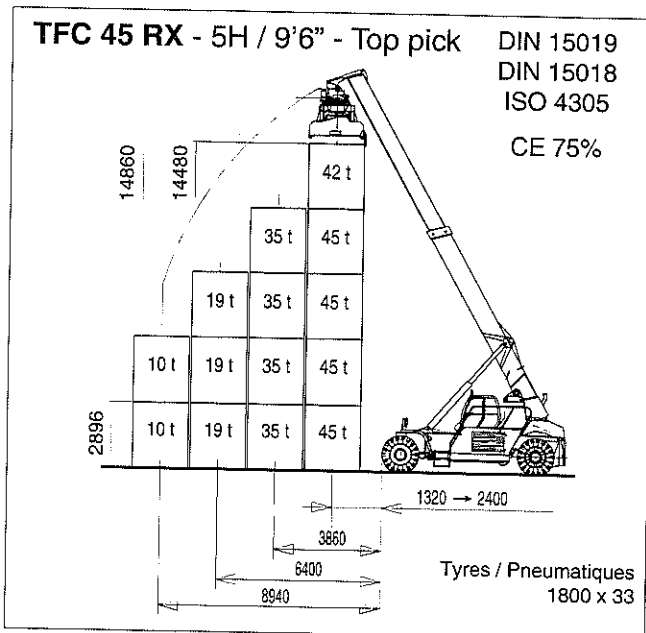
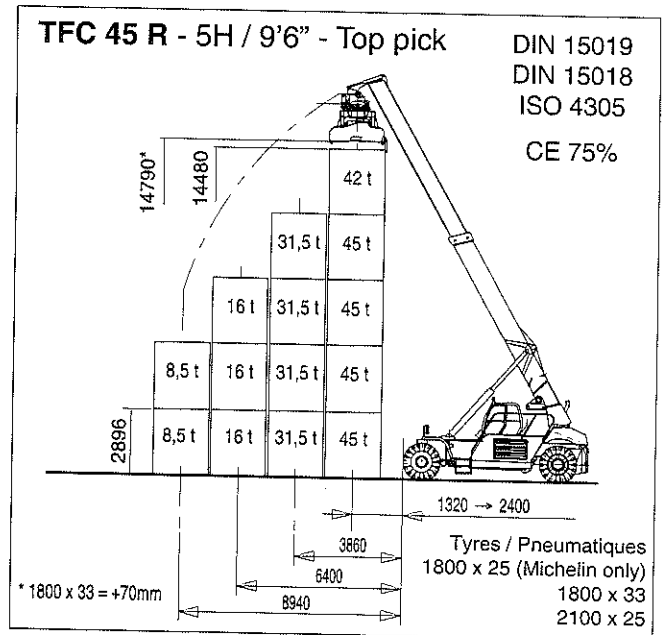
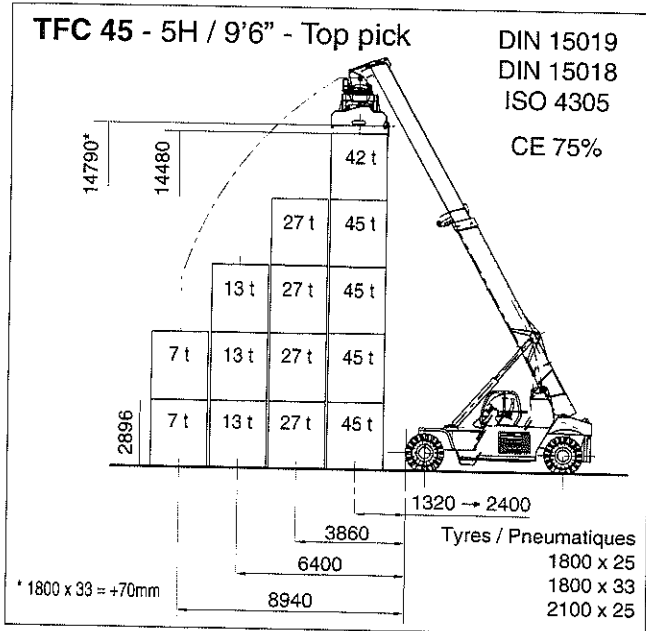


SUPER STACKER

		TFC 45	TFC 45 R	TFC 45 RX	TFC 45 RS	TFC 45 L	TFC 45 LS	TFC 45 LX	TFC LSX
TRANSLATION									
Speed FWD/REW	No load	25 Km/h	25 Km/h	25 Km/h	25 Km/h	25 Km/h	25 Km/h	25 Km/h	25 Km/h
	With 45 t load	25 Km/h	25 Km/h	25 Km/h	25 Km/h	25Km/h	25 Km/h	25 Km/h	25 Km/h
Max gradeability	No load	41%	40%	36%	38%	38%	37%	37%	35%
	45 t full load	25%	24%	22%	23%	23%	22,30%	22,30%	20,80%
Towing ability	28,9 t	28,9 t	28,9 t	28,9 t	28,9 t	28,9 t	28,9 t	28,9 t	28,9 t
WEIGHT WITH TOP-PICK SPREADER									
No load - boom down									
	Front axle	37,4 t	35,8 t	37,6 t	38,5 t	36,6 t	38 t	43,8 t	42,6 t
	Rear axle	31,2 t	37,3 t	41,2 t	38 t	38,8 t	38,4 t	41,9 t	41,8 t
	Total	68,6 t	73,1 t	78,8 t	76,5 t	75,4 t	76,4 t	85,7 t	84,4 t
45T full load travelling with angle boom :									
	45°	45°	45°	45°	40°	40°	40°	40°	40°
	Front axle	87,9 t	87,6 t	87,8 t	88,6 t	82,9 t	84,3 t	91,4 t	92,2 t
	Rear axle	25,7 t	30,5 t	36 t	32,8 t	37,5 t	37,1 t	39,3 t	37,2 t
	Total	113,6 t	118,1 t	123,8 t	121,4 t	120,4 t	121,4 t	130,7 t	129,4 t
Static - 45 T full load - 1st row									
	Front axle	96,8 t	96,5 t	96,8 t	97,6 t	95,8 t	97,2 t	103,2 t	104 t
	Rear axle	16,8 t	21,5 t	27 t	23,8 t	24,6 t	24,2 t	27,5 t	25,4 t
	Total	113,6 t	118,1 t	123,8 t	121,4 t	120,4 t	121,4 t	130,7 t	129,4 t
BOOM									
Telescoping out									
	No load, " h " version	23 sec. 0,31 m/s	23 sec. 0,31 m/s	23 sec. 0,31 m/s	23 sec. 0,31 m/s				
	No load, " hc " version	16 sec. 0,44 m/s	16 sec. 0,44 m/s	16 sec. 0,44 m/s	16 sec. 0,44 m/s	16 sec. 0,44 m/s	16 sec. 0,44 m/s	14 sec. 0,44 m/s	14 sec. 0,44 m/s
	30 t load	23 sec. 0,31 m/s	23 sec. 0,31 m/s	23 sec. 0,31 m/s	23 sec. 0,31 m/s	23 sec. 0,31 m/s	23 sec. 0,31 m/s	20 sec. 0,31 m/s	20 sec. 0,31 m/s
Telescoping in									
	No load	18 sec. 0,40 m/s	18 sec. 0,40 m/s	18 sec. 0,40 m/s	18 sec. 0,40 m/s	18 sec. 0,40 m/s	18 sec. 0,40 m/s	16 sec. 0,40 m/s	16 sec. 0,40 m/s
	30 t load	17 sec. 0,41 m/s	17 sec. 0,41 m/s	17 sec. 0,41 m/s	17 sec. 0,41 m/s	17 sec. 0,41 m/s	17 sec. 0,41 m/s	15 sec. 0,41 m/s	15 sec. 0,41 m/s
Hoisting up from 0° to 60°									
	No load, " h " version	22 sec.	22 sec.	22 sec.	22 sec.				
	No load, " hc " version	16 sec	16 sec	16 sec	16 sec	16 sec	16 sec	16 sec	16 sec
	30 t load	18 sec	18 sec	18 sec	18 sec	25 sec.	25 sec.	25 sec.	25 sec.
Hoisting down from 60° to 0°									
	no load	21 sec.	21 sec.	21 sec.	21 sec.	21 sec.	21 sec.	21 sec.	21 sec.
	30t load	14 sec.	14 sec.	14 sec.	14 sec.	14 sec.	14 sec.	14 sec.	14 sec.
Time to stack a container from 1 st height to 5 th height (4 th for LX, LSX) simultaneous functions									
	No load, " h " version	40 sec. 0,34 m/s	40 sec. 0,34 m/s	40 sec. 0,34 m/s	40 sec. 0,34 m/s				
	No load, " hc " version	35 sec 0,40m/s	35 sec 0,40m/s	35 sec 0,40m/s	35 sec 0,40m/s	35 sec 0,40m/s	35 sec 0,40m/s	28 sec 0,40m/s	28 sec 0,40m/s
	30 t load	45 sec. 0,26 m/s	45 sec. 0,26 m/s	45 sec. 0,26 m/s	45 sec. 0,26 m/s	45 sec. 0,26 m/s	45 sec. 0,26 m/s	33 sec. 0,26 m/s	33 sec. 0,26 m/s
Time to unstack a container from 5 th (4 th for LX, LSX) height to 1 st height (simultaneous functions)									
	no load	25 sec. 0,55 m/s	25 sec. 0,55 m/s	25 sec. 0,55 m/s	25 sec. 0,55 m/s	25 sec. 0,55 m/s	25 sec. 0,55 m/s	21 sec. 0,55 m/s	21 sec. 0,55 m/s
	30 t load	23 sec. 0,5 m/s	23 sec. 0,5 m/s	23 sec. 0,5 m/s	23 sec. 0,5 m/s	23 sec. 0,5 m/s	23 sec. 0,5 m/s	18 sec. 0,5 m/s	18 sec. 0,5 m/s

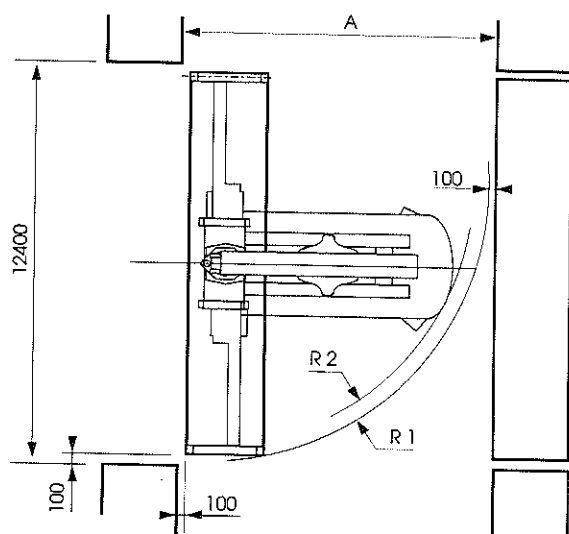
* The " hc " version is included in the standard machine for L, LS,LX and LSX

ENGINE		In accordance with EC and E.P.A regulation
Make		Cummins / QSM11
Cooling system		Water cooled
Fuel		Diesel
Type		4 stroke, inline 6 cylinders, turbocharged
Power	SAE J 1995/ ISO 3046 / DIN 6271	Maxi : 320 HP (239 kW) at 1800 rpm Nominale: 290 HP (216 kW) at 2100 rpm
Max torque at 1400 rpm	SAE J 1995/ ISO 3046/ DIN 6271	1478 Nm
Displacement		10,82 L
Alternator		Delco-Rémy - 70 A - 24 V
Starter		Delco-Rémy 39 MT HD - 400 Ampères - 24 V
Batteries		2 x 12 V - 200 Ah
Fuel consumption		18 l/h
TRANSMISSION		
Make		Dana (Clark) / TE 27 418
Clutch type		Torque converter - R = 2,292
Transmission type		Automatic Powershift Control / APC 200
Gears FWD / REV		4/4
Gears ration FWD and REV		5,07 / 2,42/ 1,38 / 0,78
FRONT AXLE		
Type		Drive axle - Double reduction with wet disc brakes
Reduction		25,40 or 22,6
REAR AXLE		
Description		Heavy duty oscillating axle
TYRES		
Dimensions		Tubeless 18.00 x 25 or 18.00 x 33 or 21.00 x 25
Pressure : (1 bar = 1 kg/cm ²)		10 bars (7,5 bars for 2100 x 25)
STEERING		
Description		Hydrostatic rear steering with double acting cylinder
BRAKING		
Type		Wet disc brakes on front axle by independant hydraulic circuit
Control		Hydraulic
Parking brake		Spring release disc on the front axle
HYDRAULIC		
Main system		Power regulated Load Sensing
Main pump		Two section variable displacement - piston pump 145+75 cc Flow 460 l/mn - Maximum pressure 350 bars
Controls		One hydraulic joystick. Boom hoist and telescoping Spreader rotation - Side shift
Auxiliary	Engine and transmission cooler Hydraulic cooler and filtration Braking axle oil cooler Joystick control	Variable displacement pump 28 cc - 58 l/mn Gear pump 40 cc - 82 l/mn Gear pump 12 cc - 25 l/mn Gear pump 8 cc - 16 l/mn
CAPACITIES		
Fuel		520 L
Hydraulic oil		750 L
Cooling system		70 L
Drive axle		94 L
Transmission		70 L
Engine		35 L
CAB		
Dimension	Wide cab in standard	Wide = 1730, deep = 1370, hight = 1485 (inside dimensions in mm)
Sound level		72 dba closed doors
Air conditioning		In standard
SECURITY		
Anti tipping device		Automatic cut-off system in case of overload
Load moment indicator		In option with "h" version, in standrad with "hc" version
Engine		Protection device (reducing engine revolutions and power output) on set parameters for : oil temperature, coolant temperature, turbo inlet air temperature and maximum engine revolutions



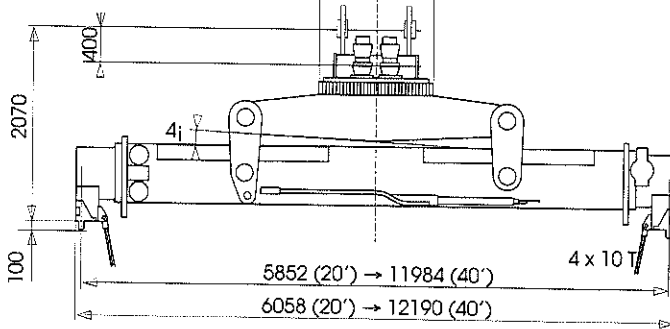
**RAYONS DE BRAQUAGE
TURNING RADIUS**

	40'		20'	
	A	R1	A	R2
TFC 45	12830	10418	10205	8785
TFC 45 R				
TFC 45 RX				
TFC 45 RS				
TFC 45 L	12964	11196	11445	10100
TFC 45 LS				
TFC 45 LX	13837	11311	12365	10100
TFC 45 LSX				



PALONNIER STANDARD TOP PICK SPREADER

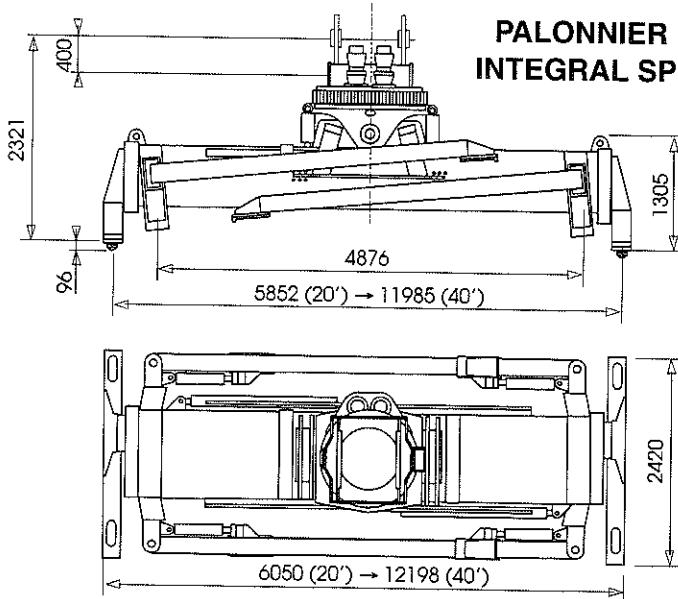
- 800 (chariotage/side shift)



Poids	8,5 t	-
Tilt	± 4°	-
Orientation	+ 95°/-185°	31 s/60 s
Chariotage	± 800 mm	11 s
Télescopage 20' - 40'		12 s
Verrouillage		1 s

Weight	8,5 t	-
Tilting angle	± 4°	-
Slewing	+ 95°/-185°	31 s/60 s
Hydraulic side shift	± 800 mm	11 s
Télescoping 20' - 40'		12 s
Locking		1 s

PALONNIER INTERMODAL AVEC TILT INTÉGRÉ INTEGRAL SPREADER WITH PILE POWER SLOPE



Poids	13,4 t	-
Tilt	± 6°	-
Orientation	- 185°/+ 105°	31 s/60 s
Chariotage	± 800 mm	11 s
Télescopage 20' - 40'	-	25/30 s
Dépliage (2)	-	11 s
Repliage (2)	-	8 s

Weight	13,4 t	-
Tilting angle	± 6°	-
Slewing	- 185°/+ 105°	31 s/60 s
Hydraulic side shift	± 800 mm	11 s
Telescoping 20' - 40'	-	25/30 s
Lowering (2)	-	11 s
Folding (2)	-	8 s

INTERMODAL HANDLING APPLICATIONS

