

TFC 45 | SUPER STACKER



TFC 45 / TFC 45 R / TFC 45 RX / TFC 45 RS / TFC 45 L / TFC 45 LS / TFC 45 LX / TFC 45 LSX

SUPER STACKER^{h/hc}

		TFC 45	TFC 45 R	TFC 45 RX	TFC 45 RS	TFC 45 L	TFC 45 LS	TFC 45 LX	TFC LSX
TRANSLATION									
Speed FWD/REW	No load	25 Km/h	25 Km/h	25 Km/h	25 Km/h	25 Km/h	25 Km/h	25 Km/h	25 Km/h
	With 45 t load	25 Km/h	25 Km/h	25 Km/h	25 Km/h	25Km/h	25 Km/h	25 Km/h	25 Km/h
Max gradeability	No load	41%	40%	36%	38%	38%	37%	37%	35%
	45 t full load	25%	24%	22%	23%	23%	22,30%	22,30%	20,80%
Towing ability	28,9 t	28,9 t	28,9 t	28,9 t	28,9 t	28,9 t	28,9 t	28,9 t	28,9 t
WEIGHT WITH TOP-PICK SPREADER									
No load - boom down									
	Front axle	37,8 t	38,1 t	38,8 t	40,2 t	37,1 t	38,2 t	40,6 t	41,5 t
	Rear axle	29,8 t	33,4 t	41,2 t	33,5 t	42,1 t	42 t	46,6 t	44,4 t
	Total	67,6 t	71,5 t	77,5 t	73,7 t	79,2 t	80,2 t	87,2 t	85,9 t
45T full load travelling with angle boom :									
	45°	45°	45°	45°	40°	40°	40°	40°	40°
	Front axle	88,3 t	88,5 t	89,1 t	90,5 t	83,3 t	84,7 t	90,3 t	91,2 t
	Rear axle	24,3 t	28 t	33,4 t	28,2 t	40,9 t	40,5 t	41,9 t	39,7 t
	Total	112,6 t	116,5 t	122,5 t	118,7 t	124,2 t	125,2 t	132,2 t	130,9 t
Static - 45 T full load - 1st row									
	Front axle	97,2 t	97,4 t	98 t	99,5 t	96,3 t	97,4 t	102 t	102,9 t
	Rear axle	15,4 t	19,1 t	24,5 t	19,2 t	27,9 t	27,8 t	30,2 t	28 t
	Total	112,6 t	116,5 t	122,5 t	118,7 t	124,2 t	125,2 t	132,2 t	130,9 t
BOOM									
Telescoping out									
	No load, " h " version	23 sec. 0,31 m/s	23 sec. 0,31 m/s	23 sec. 0,31 m/s	23 sec. 0,31 m/s				
	No load, " hc " version	16 sec. 0,44 m/s	16 sec. 0,44 m/s	16 sec. 0,44 m/s	16 sec. 0,44 m/s	16 sec. 0,44 m/s	16 sec. 0,44 m/s	14 sec. 0,44 m/s	14 sec. 0,44 m/s
	30 t load	23 sec. 0,31 m/s	23 sec. 0,31 m/s	23 sec. 0,31 m/s	23 sec. 0,31 m/s	23 sec. 0,31 m/s	23 sec. 0,31 m/s	20 sec. 0,31 m/s	20 sec. 0,31 m/s
Telescoping in									
	No load	18 sec. 0,40 m/s	18 sec. 0,40 m/s	18 sec. 0,40 m/s	18 sec. 0,40 m/s	18 sec. 0,40 m/s	18 sec. 0,40 m/s	16 sec. 0,40 m/s	16 sec. 0,40 m/s
	30 t load	17 sec. 0,41 m/s	17 sec. 0,41 m/s	17 sec. 0,41 m/s	17 sec. 0,41 m/s	17 sec. 0,41 m/s	17 sec. 0,41 m/s	15 sec. 0,41 m/s	15 sec. 0,41 m/s
Hoisting up from 0° to 60°									
	No load, " h " version	22 sec.	22 sec.	22 sec.	22 sec.				
	No load, " hc " version	16 sec	16 sec	16 sec	16 sec	16 sec	16 sec	16 sec	16 sec
	30 t load	18 sec	18 sec	18 sec	18 sec	25 sec.	25 sec.	25 sec.	25 sec.
Hoisting down from 60° to 0°									
	no load	21 sec.	21 sec.	21 sec.	21 sec.	21 sec.	21 sec.	21 sec.	21 sec.
	30t load	14 sec.	14 sec.	14 sec.	14 sec.	14 sec.	14 sec.	14 sec.	14 sec.
Time to stack a container from 1 st height to 5 th height (4 th for LX, LSX) simultaneous functions									
	No load, " h " version	40 sec. 0,34 m/s	40 sec. 0,34 m/s	40 sec. 0,34 m/s	40 sec. 0,34 m/s				
	No load, " hc " version	35 sec 0,40m/s	35 sec 0,40m/s	35 sec 0,40m/s	35 sec 0,40m/s	35 sec 0,40m/s	35 sec 0,40m/s	28 sec 0,40m/s	28 sec 0,40m/s
	30 t load	45 sec. 0,26 m/s	45 sec. 0,26 m/s	45 sec. 0,26 m/s	45 sec. 0,26 m/s	45 sec. 0,26 m/s	45 sec. 0,26 m/s	33 sec. 0,26 m/s	33 sec. 0,26 m/s
Time to unstack a container from 5 th (4 th for LX, LSX) height to 1 st height (simultaneous functions)									
	no load	25 sec. 0,55 m/s	25 sec. 0,55 m/s	25 sec. 0,55 m/s	25 sec. 0,55 m/s	25 sec. 0,55 m/s	25 sec. 0,55 m/s	21 sec. 0,55 m/s	21 sec. 0,55 m/s
	30 t load	23 sec. 0,5 m/s	23 sec. 0,5 m/s	23 sec. 0,5 m/s	23 sec. 0,5 m/s	23 sec. 0,5 m/s	23 sec. 0,5 m/s	18 sec. 0,5 m/s	18 sec. 0,5 m/s

* The " hc " version is included in the standard machine for L, LS,LX and LSX

ENGINE	In accordance with EC and E.P.A regulation	
Make	Cummins / QSM11	
Cooling system	Water cooled	
Fuel	Diesel	
Type	4 stroke, inline 6 cylinders, turbocharged	
Power	SAE J 1995/ ISO 3046 / DIN 6271	Maxi : 320 HP (239 kW) at 1800 rpm Rated : 290 HP (216 kW) at 2100 rpm
Max torque from 1000 to 1400 rpm	SAE J 1995/ ISO 3046/ DIN 6271	1478 Nm
Displacement	10,82 L	
Alternator	Delco-Rémy - 70 A - 24 V	
Starter	Delco-Rémy 39 MT HD - 400 Ampères - 24 V	
Batteries	2 x 12 V - 200 Ah	
Fuel consumption	From 15 to 18 l/h	

TRANSMISSION

Make	Dana (Clark) / TE 27 418	
Clutch type	Torque converter - R = 2,292	
Transmission type	Automatic Powershift Control / APC 200	
Gears FWD / REV	4/4	
Gears ratio FWD and REV	5,07 / 2,42/ 1,38 / 0,78	

FRONT AXLE

Type	Drive axle - Double reduction with wet disc brakes	
Reduction	25,40 or 22,6	

REAR AXLE

Description	Heavy duty oscillating axle	
-------------	-----------------------------	--

TYRES

Dimensions	Tubeless 18.00 x 25 or 18.00 x 33 or 21.00 x 25	
Pressure : (1 bar = 1 kg/cm ²)	10 bars (7,5 bars for 2100 x 25)	

STEERING

Description	Hydrostatic rear steering with double acting cylinder	
-------------	---	--

BRAKING

Type	Wet disc brakes on front axle by independant hydraulic circuit	
Control	Hydraulic	
Parking brake	Spring release disc on the front axle	

HYDRAULIC

Main system	Power regulated Load Sensing	
Main pump	Two section variable displacement - piston pump 145+75 cc Flow 460 l/mn - Maximum pressure 350 bars	
Controls	One hydraulic joystick. Boom hoist and telescoping Spreader rotation - Side shift	
Auxiliary	Engine and transmission cooler	Variable displacement pump 28 cc - 58 l/mn
	Hydraulic cooler and filtration	Gear pump 40 cc - 82 l/mn
	Braking axle oil cooler	Gear pump 12 cc - 25 l/mn
	Joystick control	Gear pump 8 cc - 16 l/mn

CAPACITIES

Fuel	700 L	
Hydraulic oil	750 L	
Cooling system	70 L	
Drive axle	94 L	
Transmission	70 L	
Engine	35 L	

CAB

Dimension	Wide cab in standard	Wide = 1730, deep = 1370, high = 1485 (inside dimensions in mm)
Sound level	72 dba closed doors	
Air conditioning	In standard	

MAINTENANCE

Auto diagnosis	"h" version : engine, transmission, general machine "hc" version : engine, transmission, hydraulic, general machine	
----------------	--	--

SECURITY

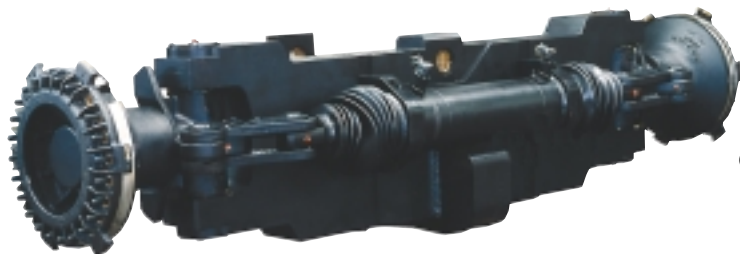
Anti tipping device	Automatic cut-off system in case of overload	
Load moment indicator	In option with "h" version, in standard with "hc" version	
Engine	Protection device (reducing engine revolutions and power output) on set parameters for : oil temperature, coolant temperature, turbo inlet air temperature and maximum engine revolutions	

Hard-wearing and long-lasting

Our container handlers are always on hand, ready to take up the harshest challenges on all 5 continents. We can draw on our 25 years of experience to select or design the right components that are guaranteed to satisfy our customers' requirements. Our container handlers are checked and tested to the most stringent criteria. When you take hold of the controls on a Super Stacker, you can feel the confidence take hold of you, leaving you free to concentrate on the handling manoeuvres.

Anti-tipping system

An overload sensor on the rear axle prevents tipping by automatically shutting down those functions that increase the radius (telescoping out and lowering).



Oscillating rear axle

The oscillating rear axle guarantees excellent stability on all ground conditions. The double-action steering cylinder gives a low turning radius.

Clear rear visibility

The shape of the counterweight was optimised to offer a wide and unhindered view and increased safety for personnel during travel.



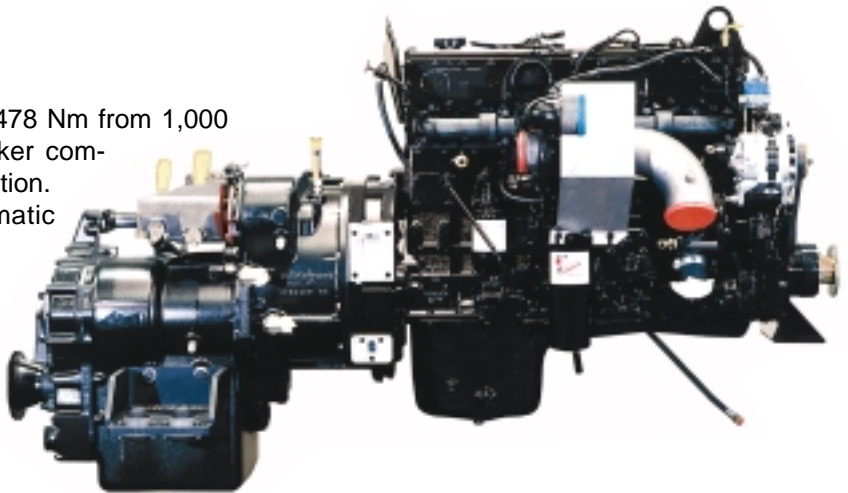


Spreader tilt angle

Difficult gripping manoeuvres can be made easier by selecting the damping system while in lock mode if the natural slope of the spreader is not enough.

Drive

The 239 kW high torque/low rpm engine (1,478 Nm from 1,000 to 1,400 rpm) ensures that the Super Stacker combines maximum power with low fuel consumption. Its management system includes an automatic engine safety programme.



Boom

The following special design features bring high telescoping speeds to the booms on the h and hc range:

- The use of high-tensile steel gives the structures the strength to operate under high bending and torsional stresses with no risk of permanent deformation.
- The guide systems for the cylinder and telescoping section allow the slide pads to be fine adjusted, giving both them and the telescoping mechanism a longer life span.
- All the telescoping components can be reached from behind the boom for easier maintenance work.



Container locking

The locking mechanisms are designed for intensive use and are positioned in the spreader frame for full protection from impacts and foul weather. Our detection system prevents locking errors during the locking action to give all-round operational safety.



Maintenance

The self-diagnosis system and easy access to the main components ensure minimum downtime during maintenance work.



Cab

The spacious air-conditioned and soundproofed cabin also includes an adjustable, air-cushioned seat to give maximum operator comfort.

The in-cab electrical components have all been placed in their own compartment for complete protection and ease of maintenance.

Clear instrumentation

A quick scan of the instrument panel clearly reveals vital information at a glance.



HC VERSION

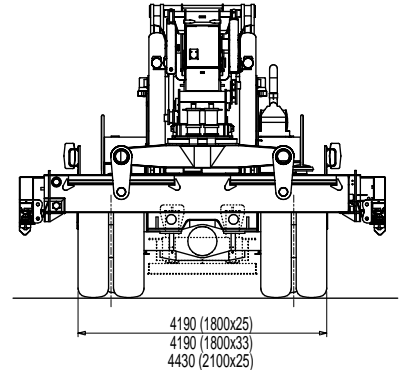
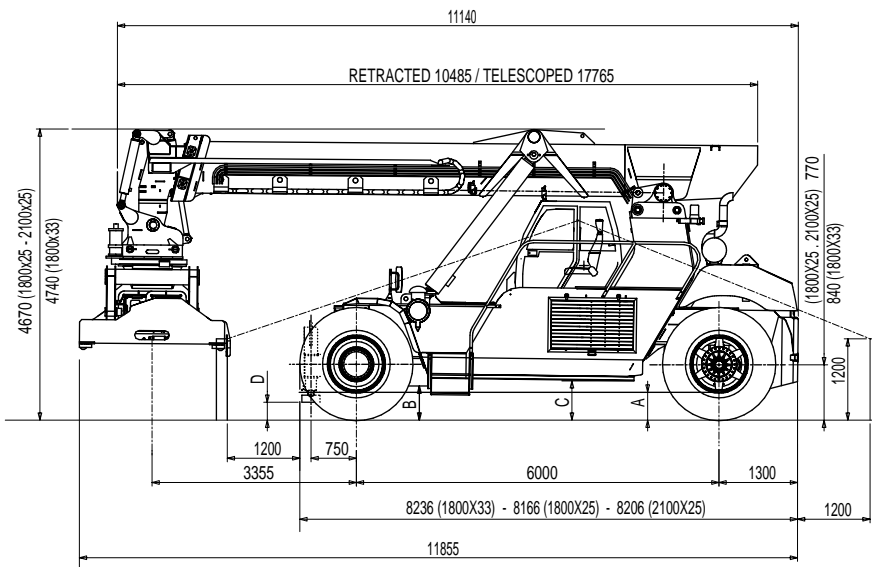


In response to specific requests, we have developed this refined, high comfort ("hc") version, which brings the following equipment to the standard "h" version:

- Load moment indicator
- Regeneration system for higher lifting speed
- Flexibility and damping of movements hoisting and telescoping functions
- Container counter
- Automatic twist lock on the spreader
- 30' automatic stop spreader
- Auto radio CD
- Auto diagnosis for hydraulic maintenance.

NB: the "hc" finish is applied as standard to L, LS, LX and LSX models.

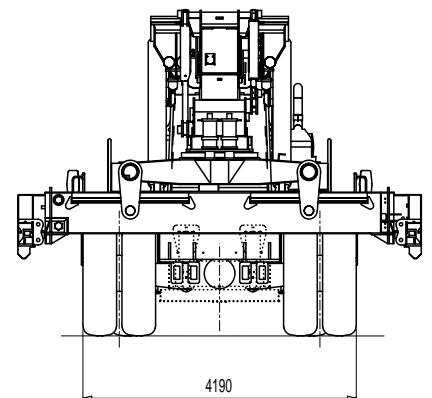
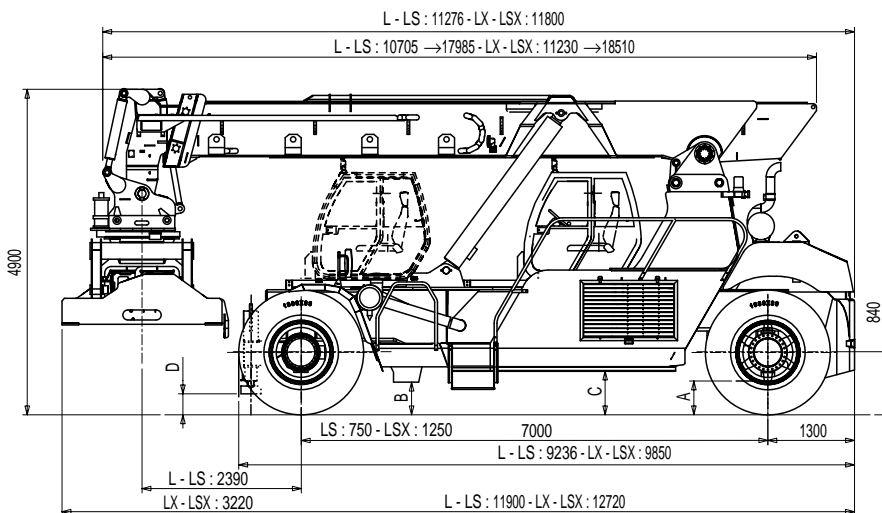
TFC 45 - R - RX - RS



GROUND CLEARANCE		
	1800 x 25	1800 x 33
A	320	390
B	420	490
C	500	570
D (RS)	315	385

TRACKS		
	Front	Rear
1800 x 25	3033	2770
2100 x 25	3167	2870
1800 x 33	3033	2770

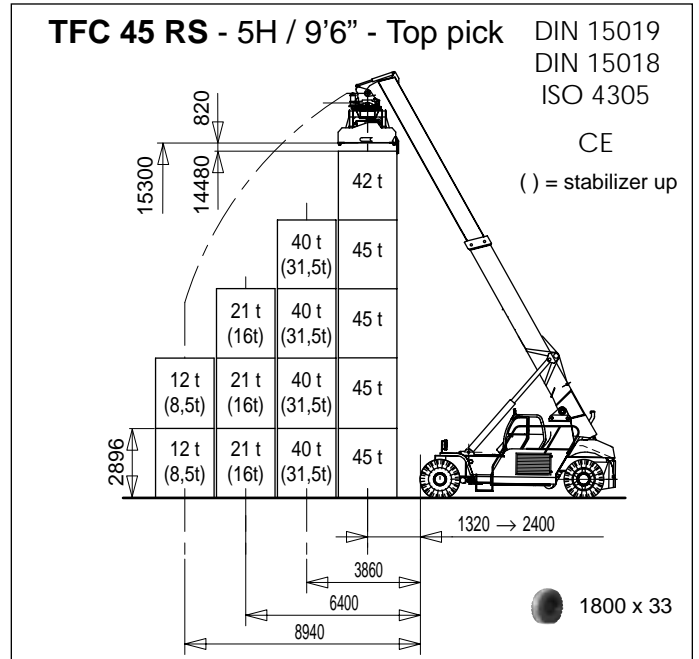
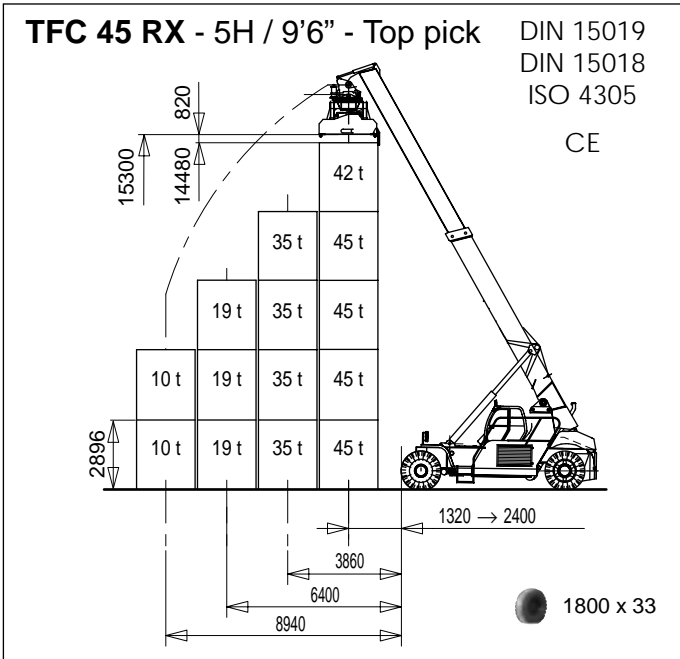
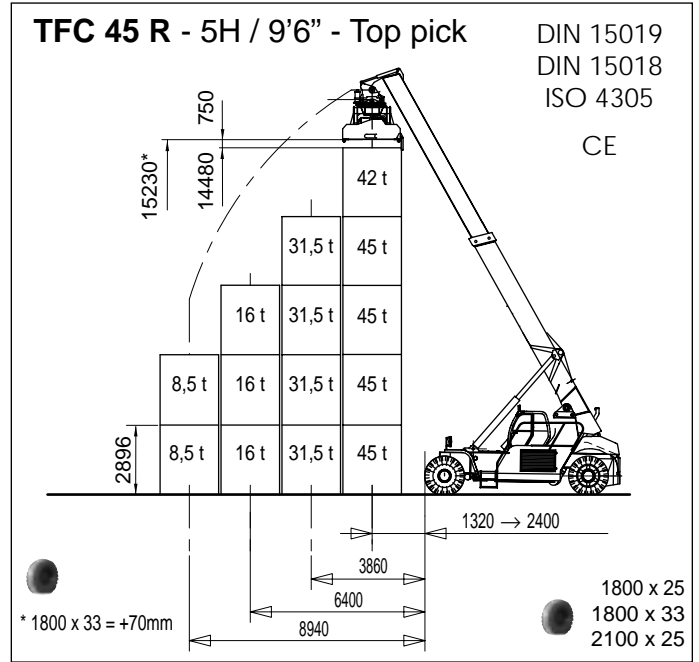
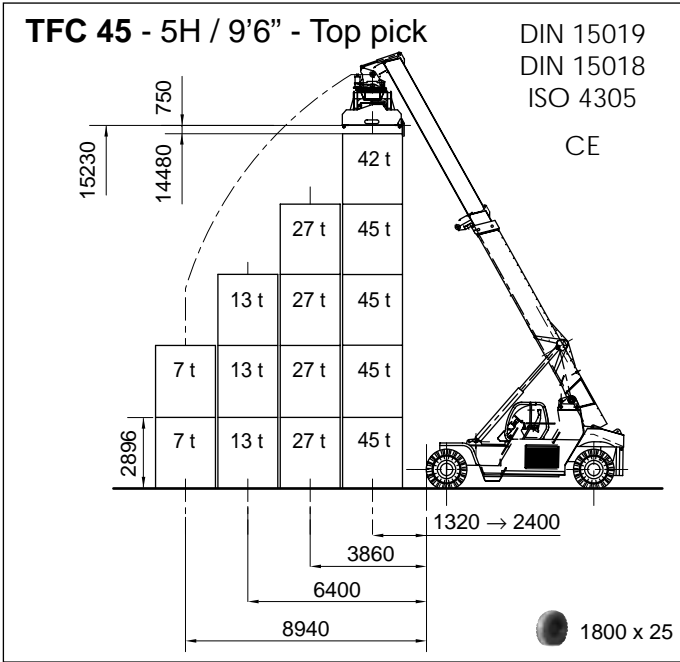
TFC 45 L - LS - LX - LSX



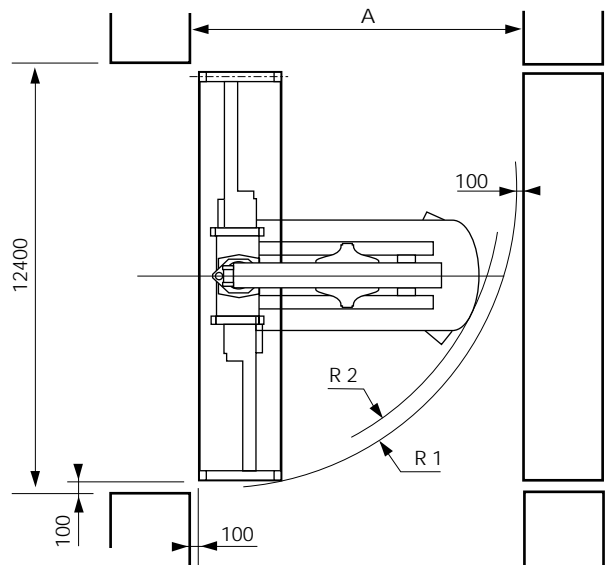
GROUND CLEARANCE	
	1800 x 33
A	390
B	490
C	570
D (LS - LSX)	385

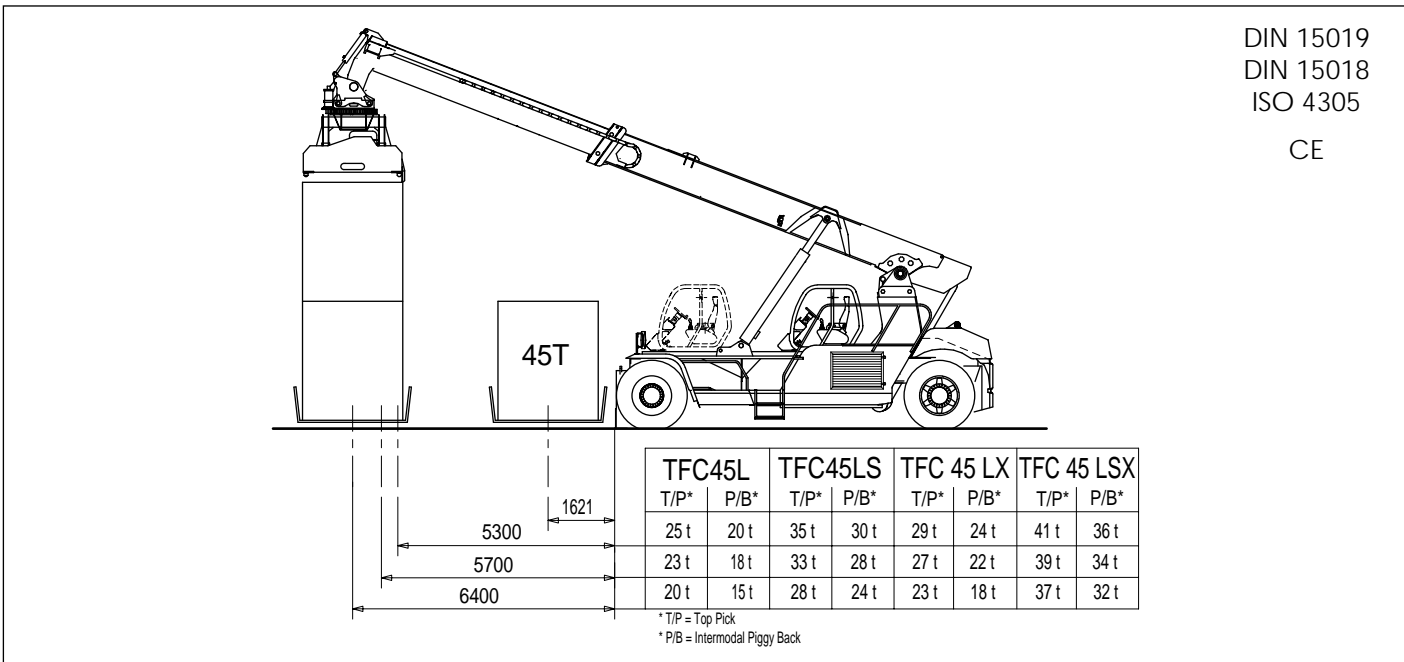
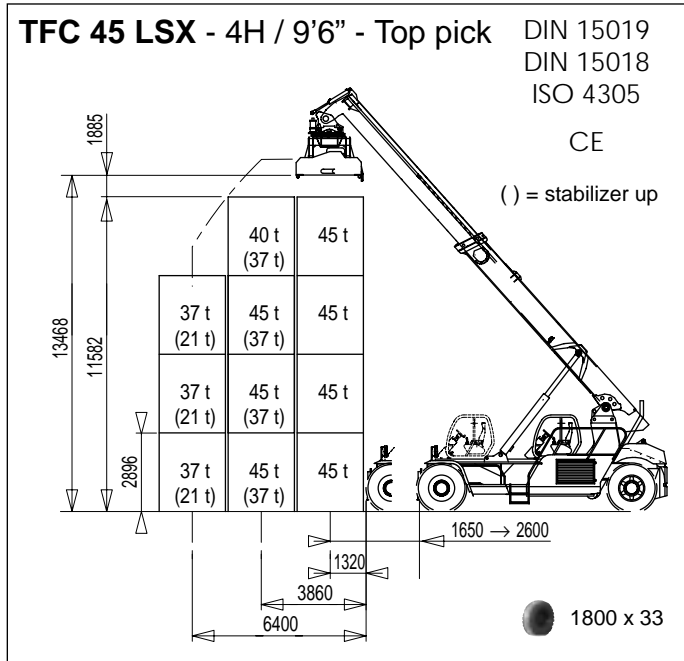
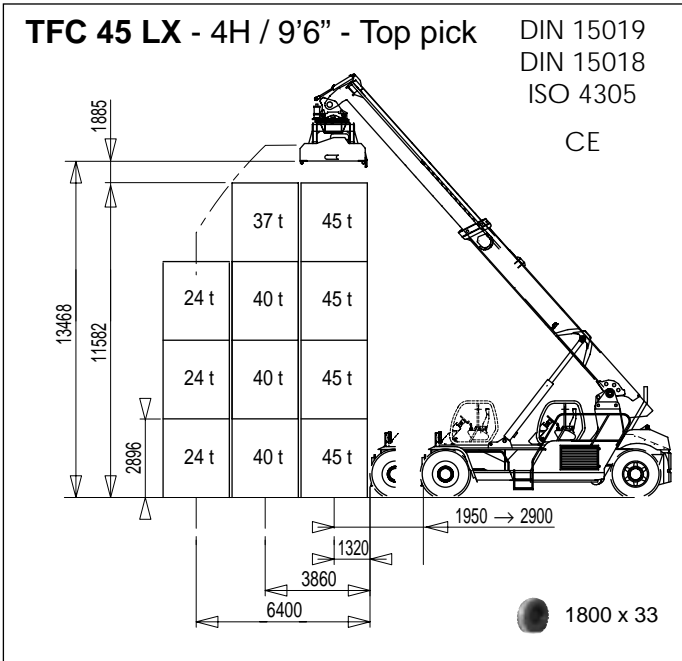
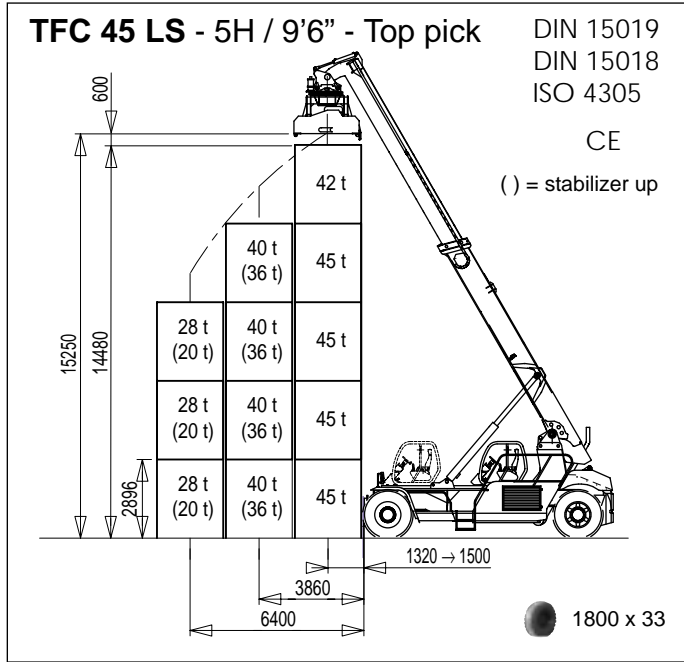
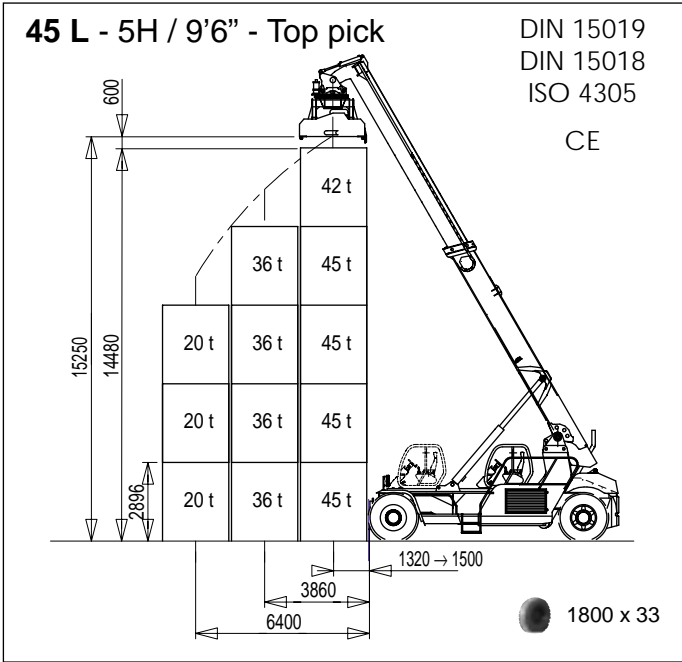
TRACKS		
	Front	Rear
1800 x 33	3033	2770

Wide powered sliding cab in standard



	40'		20'	
	A	R1	A	R2
TFC 45	12830	10418	10205	8785
TFC 45 R				
TFC 45 RX				
TFC 45 RS				
TFC 45 L	12964	11196	11445	10100
TFC 45 LS				
TFC 45 LX	13837	11311	12365	10100
TFC 45 LSX				



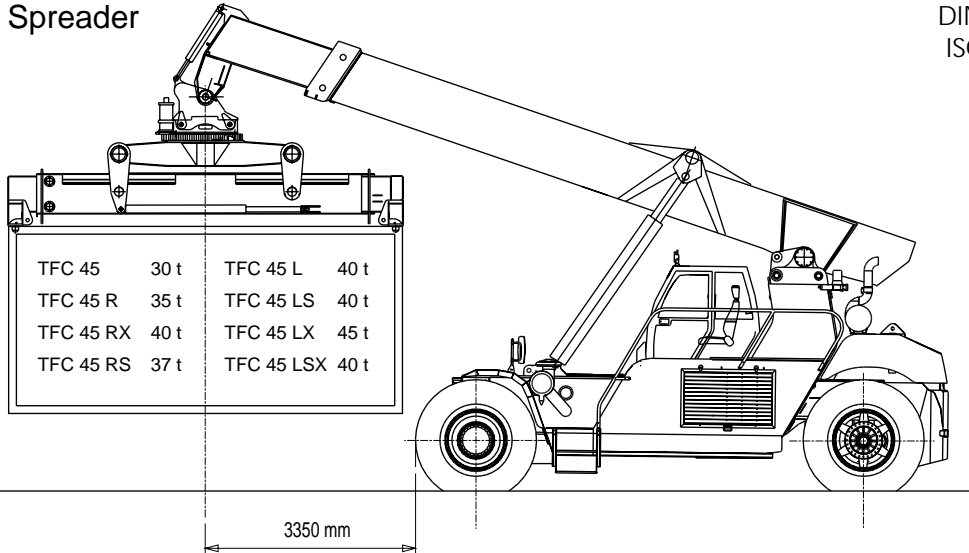


20' - END-ON CAPACITY

Top pick Spreader

DIN 15019
DIN 15018
ISO 4305

CE

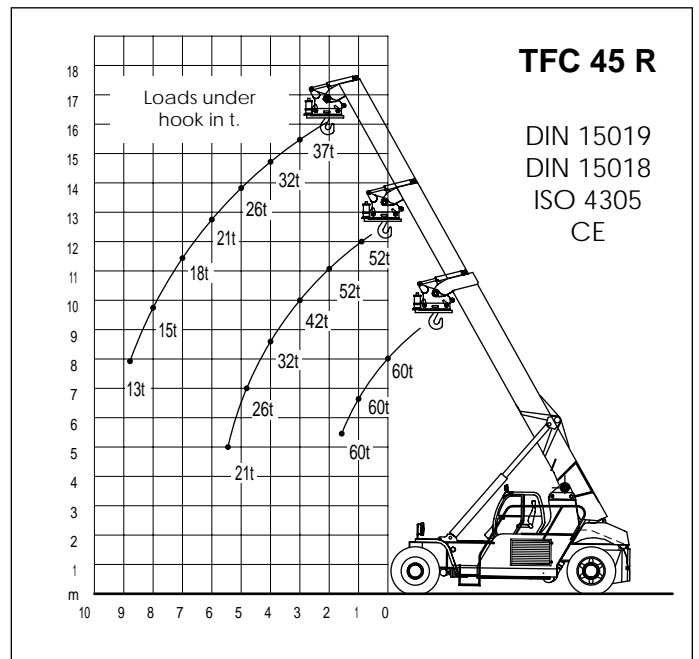
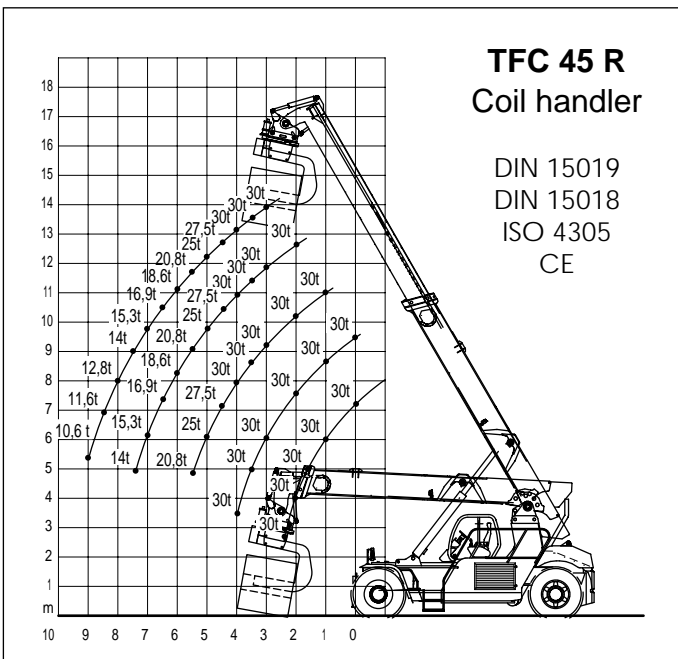
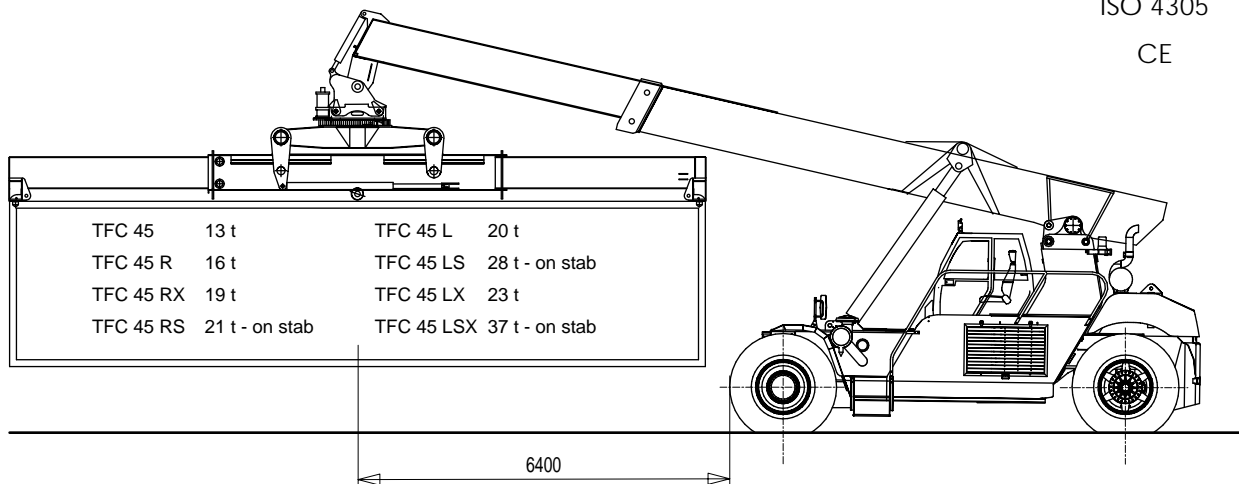


40' - END-ON CAPACITY

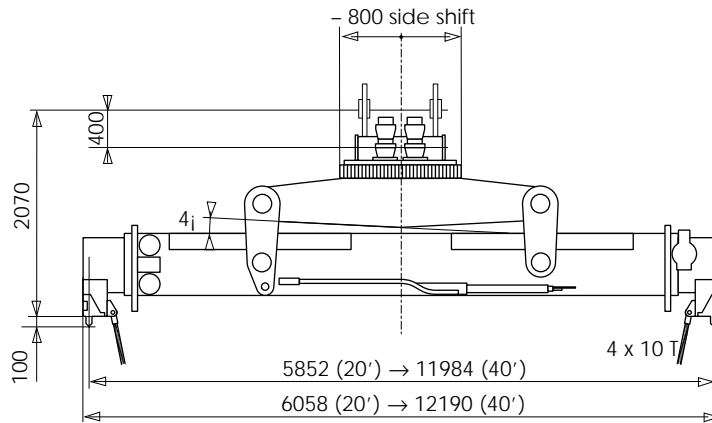
Top pick Spreader

DIN 15019
DIN 15018
ISO 4305

CE



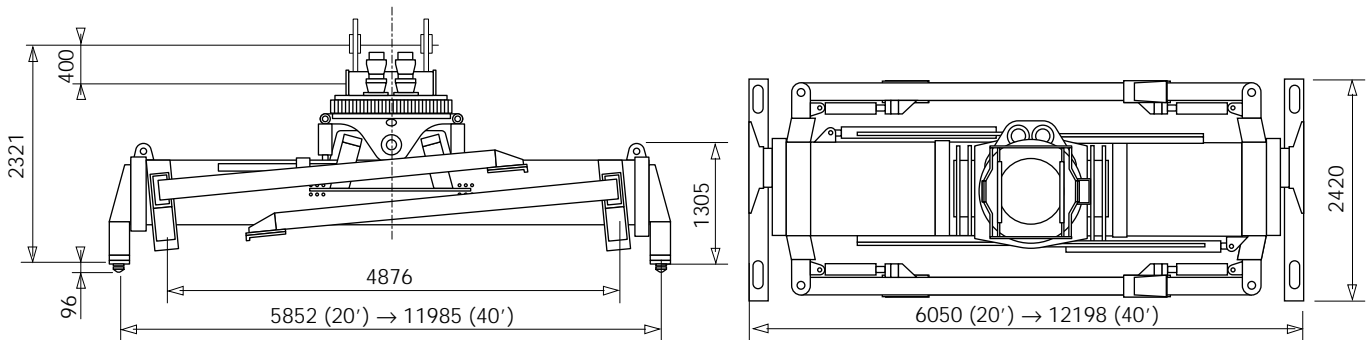
TOP PICK SPREADER



(F)

Weight	8,5 t	-
Tilting angle	± 4°	-
Slewing	+ 95°/-185°	31 s/60 s
Hydraulic side shift	± 800 mm	11 s
Telescoping	20' - 40'	12 s
Locking		1 s

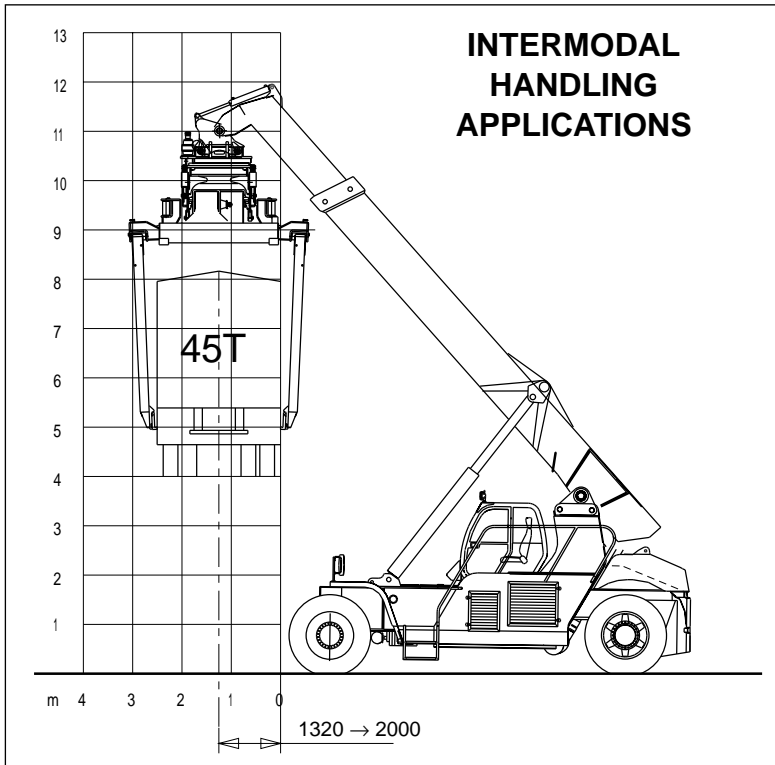
INTERMODAL SPREADER WITH INTEGRATED TILTING



(F)

Weight	13,4 t	-
Tilting angle	± 6°	-
Slewing	- 185°/+ 105°	31 s/60 s
Hydraulic side shift	± 800 mm	11 s
Telescoping	20' - 40'	25/30 s
Lowering (2)	-	11 s
Folding (2)	-	8 s

SPECIAL ATTACHMENTS



TFC 45 LSX
Magnet

R (m)	W (t)
1	45
3,5	45
4,5	45
5	40
5,5	36

Steel application

TFC 45 LSX
Plate tong handler attachment

R (m)	W (t)
1	45
3,5	45
4,5	45
5	40
5,5	36

Further attachments on request !



TEREX | PPM

SUPER STACKER

TFC 45^{h/hc}



Les photos peuvent montrer des équipements optionnels - Nous nous réservons le droit de modifier les spécifications données sans préavis

The information contained in this brochure / product catalogue merely consists of general descriptions and a broad compilation of performance features which might not apply precisely as described under specific application conditions or which may change as a result of further product development.
The desired performance features only become binding once expressly agreed in the final contract.
Subject to change without notice !

OPTIONS

- Intermodal spreader
- Load moment indicator
- Powered Pile Slope $\pm 5^\circ$ tilt, side to side
- Fixed hook 60 t
- Tires 1800 x 33
- Hydraulic sliding cab
- 53 points automatic greasing device
- Second seat
- Rear vision camera
- Low temperature kit
- Customer colour

Terex Cranes France SAS - PPM

Z.I. de la Saule - B.P. 106

F-71304 Montceau-les-Mines Cedex

Tél. 33 (0)3 85 67 38 58 - Fax 33 (0)3 85 67 39 35

www.terex-ppm.com

sales@ppmterex.com

Agent

TFC45^{h/hc} / 2 - C.S.P. 04 70 98 33 47 - 01/2007