

Kalmar DCE280-12 RoRo

Lifting data

Lifting capacity, rated (kg)	28000
Lifting speed, unloaded – at rated load (m/s)	0,25 – 0,20
Lowering speed, unloaded – at rated load (m/s)	0,20 – 0,30

Driving data

Travelling speed forward, unloaded – at rated load (km/h)	25 – 23
Travelling speed backward, unloaded – at rated load (km/h)	25 – 23
Gradeability max, unloaded – at rated load (%)	58 – 32
Gradeability at 2 km/h, unloaded – at rated load (%)	39 – 22
Drawbar pull, max. (kN)	212

Stability according to EN 1551

Weight of truck

Service weight (kg)	38700
Axle load front, unloaded – at rated load (kg)	17500 – 61600
Axle load rear, unloaded – at rated load (kg)	21200 – 5100

Engine

Manufacturer – type designation	Volvo – TAD760VE (Turbo-Intercooler)
Fuel – type of engine	Diesel – 4-stroke
Number of cylinders – displacement (cm ³)	6 – 7150
Power according to ISO 3046 – at revs (kW/rpm)	180 – 2200
Torque according to ISO 3046 – at revs (Nm/rpm)	1100 – 1500
Alternator, type – power (W)	AC – 2240
Starting battery, voltage – capacity (V – Ah)	2×12 – 140
Fuel consumption, normal driving (l/h)	16

Transmission

Manufacturer – type designation	Dana – TE17000
Clutch, type	Torque converter
Gearbox, type	Hydrodynamic Powershift
Number of gears, forward – reverse	3 – 3
Driving axle, manufacturer – type	Kessler D91 – Differential and hub reduction

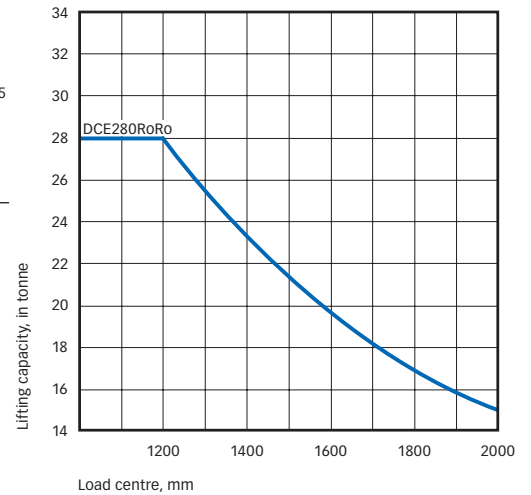
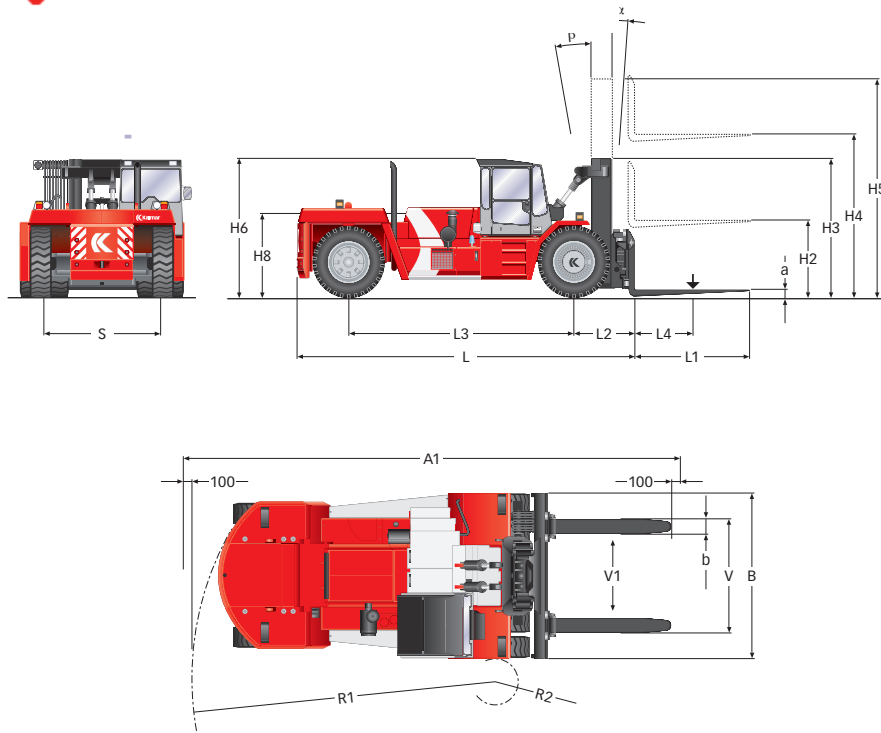
Wheels

Type	Pneumatic
Dimension, front – rear (inch)	16.00×25 – 16.00×25
Number of wheels, front – rear (*driven)	4* – 2
Pressure (MPa)	1,0

Miscellaneous

Steering system, type – maneuvering	Servo assisted – Steering wheel
Service brake system, type – affected wheels	Wet disc brakes – Drive wheel
Parking brake system, type – affected wheels	Spring brake – Drive wheel
Max. hydraulic pressure (MPa)	20,0
Noise level according to EN12053, inside Spirit Delta (db(A))	–
Noise level according to 2000/14/EC, outside (db(A))	–
Fuel volume (l)	415
Hydraulic oil volume (l)	330





Dimensions

Length of truck, to front face of fork arm (mm)	L	6550
Width of truck (mm)	B	3410
Height of basic machine, Spirit Delta (mm)	H6	2830
Height of seat, Spirit Delta (mm)	H8	1850
Distance between centre of front axle – front face of fork arm (mm)	L2	1245
Wheelbase (mm)	L3	4250
Load centre (mm)	L4	1200
Track (c-c), front – rear (mm)	S	2440 – 2540
Turning radius, outer – inner (mm)	R1 – R2	5900 – 450
Ground clearance, min. (mm)		200
Max. height when tilting cab, Spirit Delta (mm)	T1	–
Max. width when tilting cab, Spirit Delta (mm)	T2	–
Min. aisle for 90° stacking with forks (mm)	A1	9600
Lifting height (mm)	H4	3200
Mast height, min. (mm)	H3	2840
Mast height, max. (mm)	H5	4490
Tilting of lifting mast, forward – backward (°)	$\alpha - \beta$	4 – 10
Fork width (mm)	b	300
Fork thickness (mm)	a	110
Length of forkarm (mm)	l	2400
Width across fork arms, max – min (mm)	V	3150 – 1650
Sideshift \pm at width of across fork arms (mm)	V1 – V	400 – 2350

The design and materials specification are subject to alternation without prior notice.
Tolerances according to K-standard 95430.0008/0009

