



Headquarters  
 Visiting address:  
 Hornweg 18  
 1045 AR Amsterdam  
 The Netherlands

Postal address:  
 PO Box 20595  
 1001 NN Amsterdam

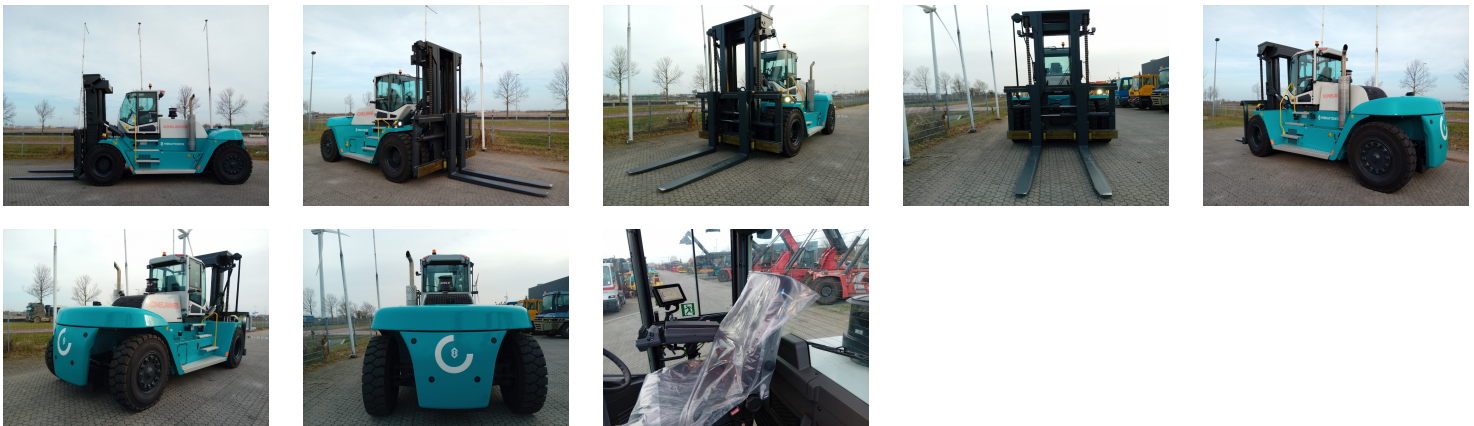
Email [sales@forkliftcenter.com](mailto:sales@forkliftcenter.com)  
 Phone +31 (0) 20 497 4101  
 Fax +31 (0) 20 497 4865

Forkliftcenter Middle East  
 Email [dubai@forkliftcenter.com](mailto:dubai@forkliftcenter.com)  
 Phone +971 (0) 566 055 041

Forkliftcenter Australia  
 Email [australia@forkliftcenter.com](mailto:australia@forkliftcenter.com)  
 Phone +61 (0) 4 2828 2981

Forkliftcenter Americas  
 Email [americas@forkliftcenter.com](mailto:americas@forkliftcenter.com)  
 Phone +507 657 80397

## SMV 25-1200 C 4 Whl Counterbalanced Forklift >10t



Ref.nr. :	880010009
Year	2024
Lifting capacity :	25000kg
Hour meter reading :	Demo hrs
Engine :	Diesel
Load cntr of gravity:	1200 mm
Overall height:	3810 mm
Fork length:	2400 mm
Accessories:	No CE, Stage 3A, sideshift & forkpositioner, full cabin, airco, heater, working lights, beacon, EPA
Lifting height :	4000 mm
Mast type :	Duplex
Tires :	Air
Price:	ON REQUEST

all rights reserved Forkliftcenter B.V.