

HYSTER - H10XM-ECD8



FLC	880010390
Brand	HYSTER
Model	H10XM-ECD8
Category	Empty Container Handling

[More details](#)

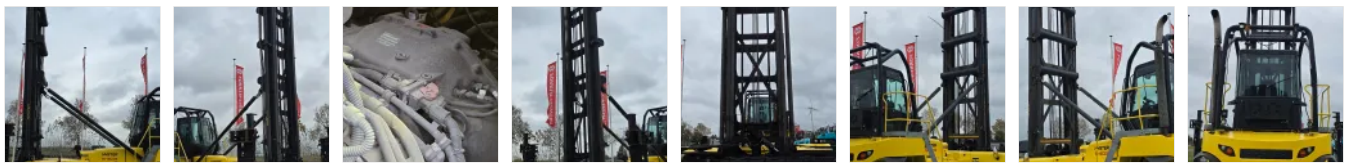
Visiting Address

Hornweg 18
1045 AR Amsterdam
The Netherlands

Postal Address

PO Box 20595
1001 NN Amsterdam
The Netherlands

Phone +31 20 497 4101
Fax +31 20 497 4865
E-mail info@forkliftcenter.com
Site www.forkliftcenter.com
Trade Reg 34182112
VAT NL8113.15.630.B01



SPECIFICATIONS

FLC	880010390	Service weight	42080
Year	2018	Engine manufacturer	Cummins
Power	Diesel	Engine type	QSB6.7
Capacity	10000	Engine AdBlue	Yes
Mast type	Duplex	Engine stage	Stage 3B
Lift height	18846	Transmission manufacturer	ZF
Hours	13947	Transmission type	Not readable
Cabine height	4250	Front axle manufacturer	Axel Tech
Center of gravity	1220	Front axle type	PRC1756W3H234411
Overall height	10750	Extra info	AdBlue, Stage 3B, central grease, full cabin, airco, heater, street + working lights, beacon
Tyre type	Air		

