

**Visiting Address**

Hornweg 18  
1045 AR Amsterdam  
The Netherlands

**Postal Address**

PO Box 20595  
1001 NN Amsterdam  
The Netherlands

**Phone**

+31 20 497 4101

**Fax**

+31 20 497 4865

**E-mail**

info@forkliftcenter.com

**Site**

www.forkliftcenter.com

**Trade Reg**

34182112

**VAT**

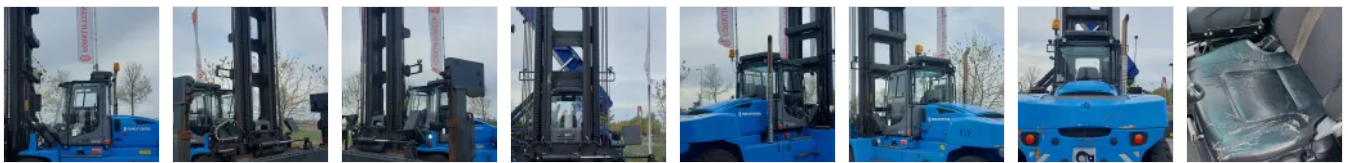
NL8113.15.630.B01

## KALMAR - DCG160-12



FLC	880009031
Brand	KALMAR
Model	DCG160-12
Category	Empty Container Handling

[More details](#)



### SPECIFICATIONS

FLC	880009031	Service weight	29120
Year	2015	Engine manufacturer	Cummins
Power	Diesel	Engine type	QSB6.7
Capacity	16000	Engine tier	EPA
Mast type	Duplex	Engine stage	Stage 3A
Lift height	11120	Transmission manufacturer	ZF
Hours	18060	Transmission type	3 WG 171
Free lift height	Duplex	Front axle manufacturer	Kessler
Cabine height	3400	Front axle type	D 81PL478
Center of gravity	1200	Extra info	Stage 3A, full cabin, airco, heater, extra working lights, beacon
Overall height	6600		

